

Red DVD Map Update Instructions – [click here](#)
Green DVD Map Update Instructions – [click here](#)

Red DVD Map Update Instructions for HDD Navigation System

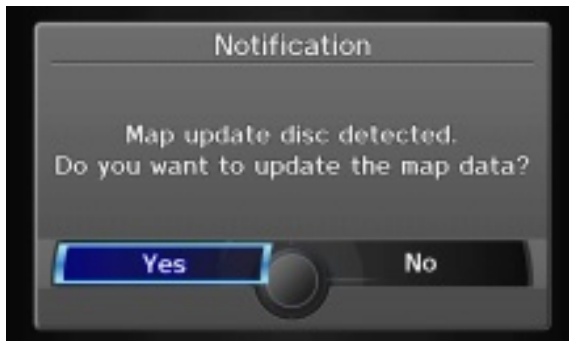
IMPORTANT: READ THESE INSTRUCTIONS IN THEIR ENTIRETY BEFORE YOU BEGIN UPDATING THE NAVIGATION SYSTEM.

The update time varies between the following two methods to update the navigation system:

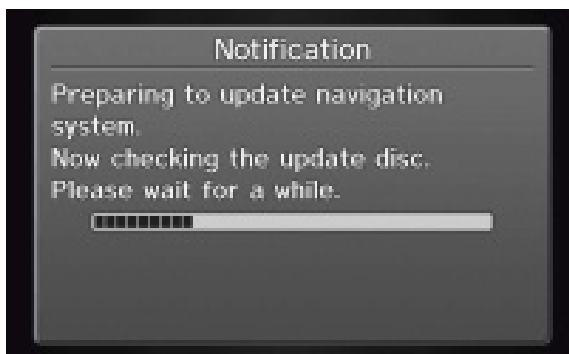
- Full Power Update** – about 2 hours.
- Background Update** – between 3.5 and 5 hours.

1. Before starting the update, make sure you have the password that came with the map update disc.
2. Park your vehicle in a safe, well-ventilated place. Do not try to start the update while driving.
3. Insert the map update disc into the audio system's disc slot.
4. A notification message appears asking if you want to update the navigation system map data. Select **Yes**.

NOTE: The audio unit displays "UNSUPPORTED."



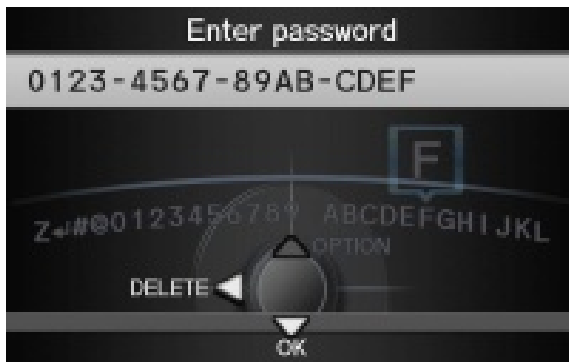
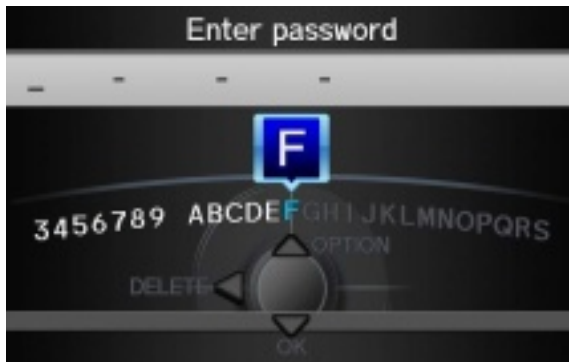
After you select **Yes**, the following notification message appears.



5. After a few moments, a prompt appears asking if you have the update password. Select **Yes**.



6. Enter the password, and select **OK**.



7. A prompt appears asking you to select either the **Full Power update** or the **Background update** method. Refer to the table below and the enclosed instructions for both update methods for more information.



	Full Power update	Background update
Duration	About 2 hours	About 3½ to 5 hours
Can I use the navigation system during the update?	No	Yes, after your region is updated (about 40 minutes)
Can the update be interrupted?	Yes*	Yes*

* You can pause the update process by either turning the key to the OFF position or ejecting the disc. To restart the update process, select **Map Update Status** from the **INFO** menu, or re-insert the disc.

8. Select either the **Full Power update** or **Background update** procedure, and refer to the applicable update instructions.

FULL POWER UPDATE

The Full Power update takes about 2 hours to complete.

You cannot use the HDD (Hard Disk Drive) audio, the HFL (Hands Free Link), or the navigation system during this time.

NOTE:

- An incorrect time may be displayed during the update. It will reset automatically when the update is finished.
- Make sure your engine is running during the navigation system update. If you shut off your vehicle during the update, when you turn your vehicle back on, select **Map Update Status** from the **INFO** menu, or re-insert the update disc.
- Do not run the navigation system update with the key in the ACC position (engine off but the radio is on) as this may drain your battery.

Make sure you do steps 1 through 8 on pages 1 -3 of this document.

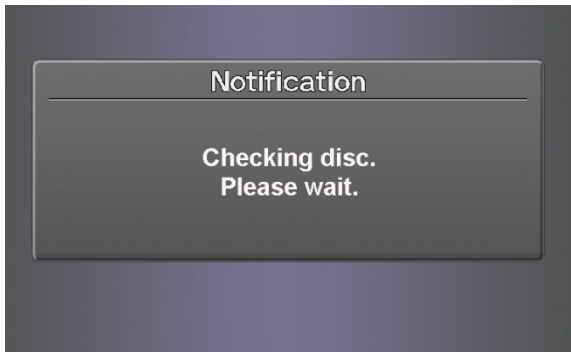
1. After selecting **Full Power update**, a notification message appears on the screen: “After rebooting, the update will start.” Select **OK** to begin the update.



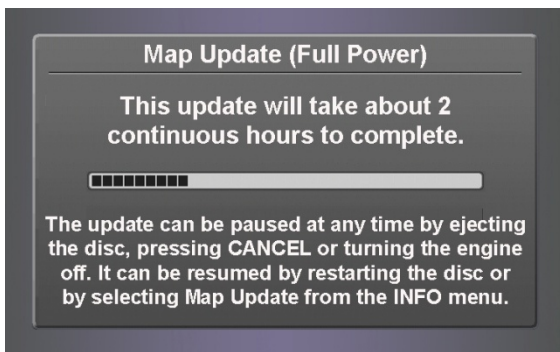
2. The navigation system automatically reboots.



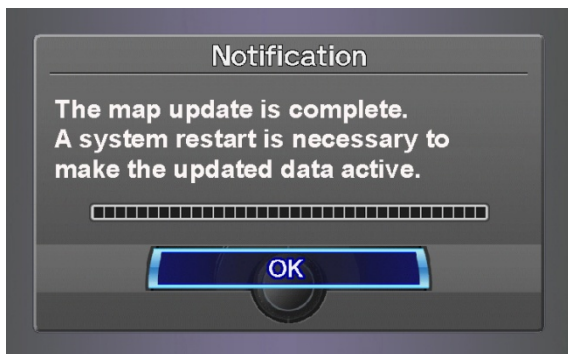
3. After the reboot, this message appears: “Checking disc. Please wait.”
NOTE: The audio unit no longer displays “UNSUPPORTED.”



- The update status screen is displayed for about 2 hours.
NOTE: The status bar does not show any changes for the first **7 minutes**.



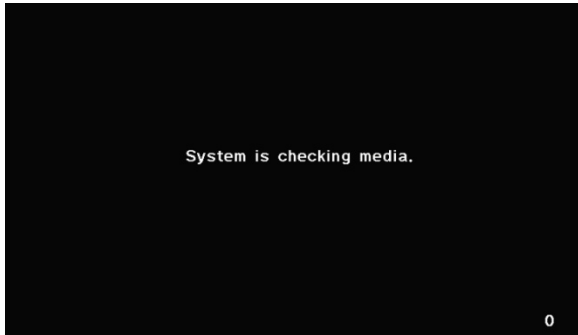
- When the download is complete, the system prompts you to restart the navigation system. Select **OK**.



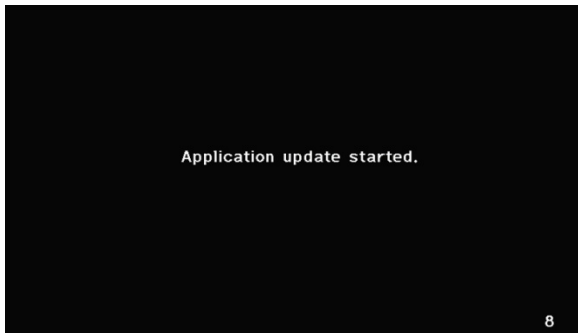
- The navigation system reboots.



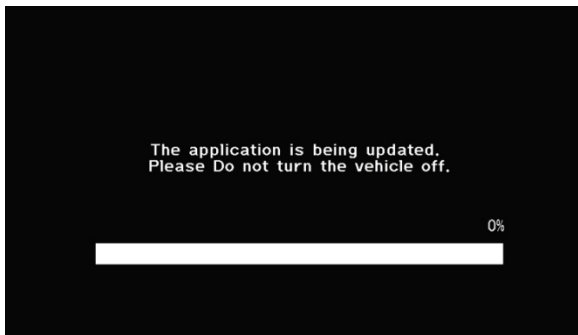
7. The following message appears: "System is checking media."



8. The navigation system begins to update with the new software.

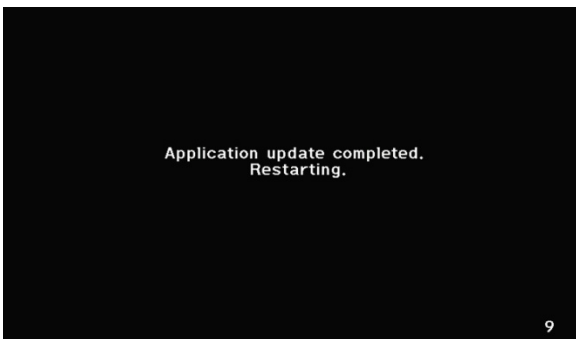


9. The screen changes to an update bar. The application update load time is **about 3 min.**
NOTE: The status bar does not show any changes for the first **1 min.**





10. When the update is complete, this message appears: "Application update completed. Restarting."



11. The navigation system reboots.



12. The disclaimer screen appears.



13. The updated map appears after selecting **OK**.

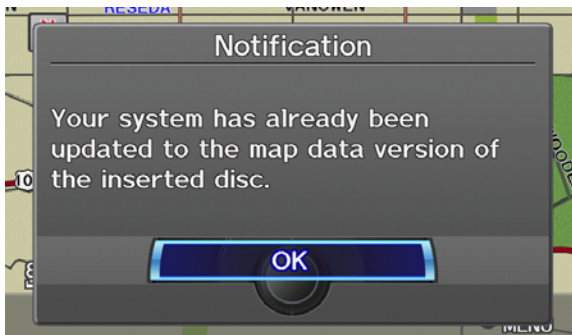


14. You may now eject the update disc.

15. Cycle the ignition key to reboot the navigation system.

NOTE:

- a. The clock automatically resets after the navigation system is map-matched.
- b. If you forget to remove the navigation update disc after the system has finished its update and cycle the key, or if you try to reload the navigation update disc after the update is done, the following message appears: "Your system has already been updated to the map data version of the inserted disc."



BACKGROUND UPDATE

The Background update takes between 3.5 to 5 hours to complete.

There are two parts to the background update:

Transferring the update program to your navigation system - this takes about 40 minutes.

You cannot use the HDD (Hard Disk Drive) audio, the HFL(Hands Free Link), or the navigation functions during this time.

Updating the navigation system – This process takes between 3 to 4.5 hours to complete. You can use the navigation during this time. The HDD and the HFL operate normally.

NOTE:

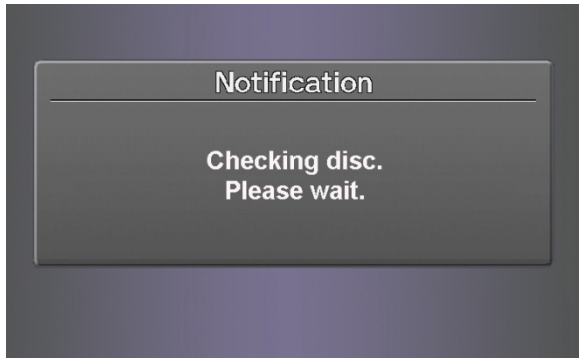
- The incorrect time may display on the clock during the update. It will reset automatically when the update is finished.
 - Make sure your engine is running during the navigation system update. If you shut off your vehicle during the update, when you turn your vehicle back on, select **Map Update Status** from the **INFO** menu, or re-insert the update disc.
 - Do not run the navigation system update with the key in the ACC position (engine off but the radio is on) as this will drain your battery
1. Make sure you do steps 1 through 8 on pages 1-3 of this instruction set.
 2. After selecting **Background update**, a notification message appears on the screen: "After rebooting, the update will start." Select **OK** to begin the update.



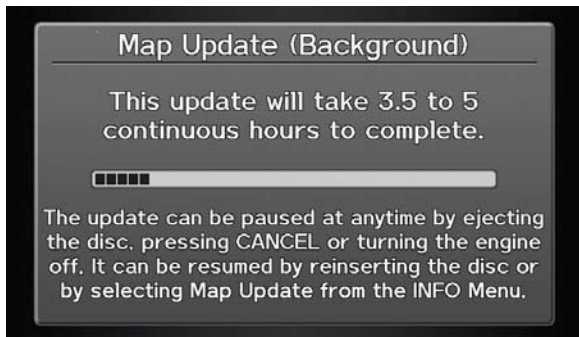
3. The navigation system automatically reboots.



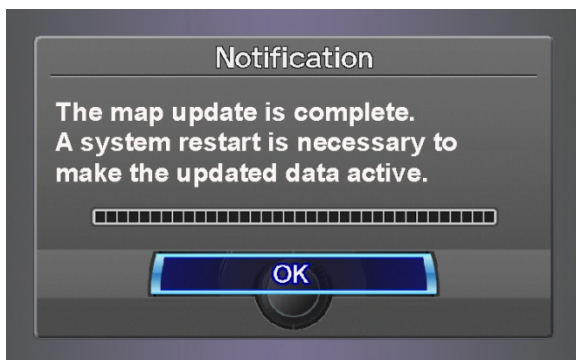
- The following message appears after the first reboot: "Checking disc. Please wait."
NOTE: The audio unit no longer displays "UNSUPPORTED."



- The update status screen is displayed while the navigation system downloads the update (about 40 minutes).
NOTE: The status bar does not show any changes for the first **7 minutes**.



- When the download is complete, the system prompts you to restart the navigation system. Select **OK**.



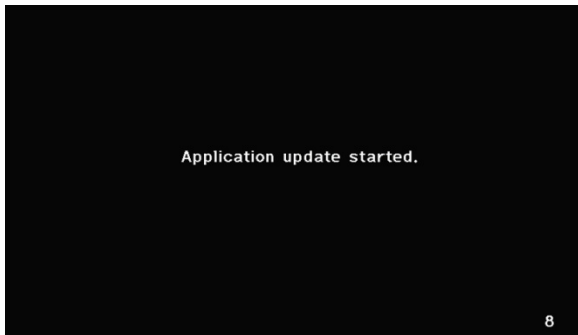
7. The navigation system reboots.



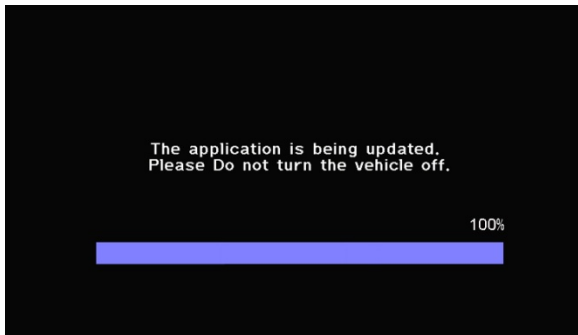
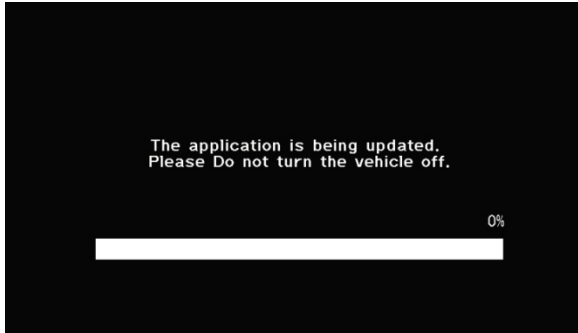
8. This message appears: "System is checking media."



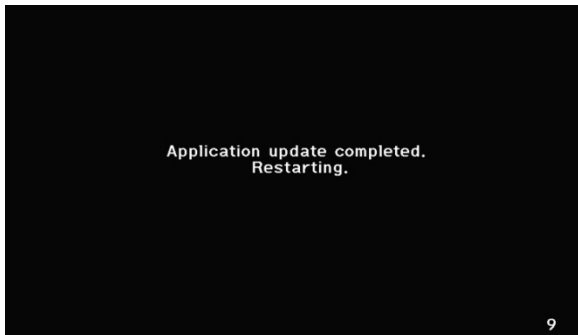
9. The navigation system begins to update with the new software.



10. The screen changes to an update bar. The application update load time is **about 3 min.**
NOTE: The status bar does not show any changes for the first **1 min.**



11. When the update is complete, this message appears: "Application update completed. Restarting."



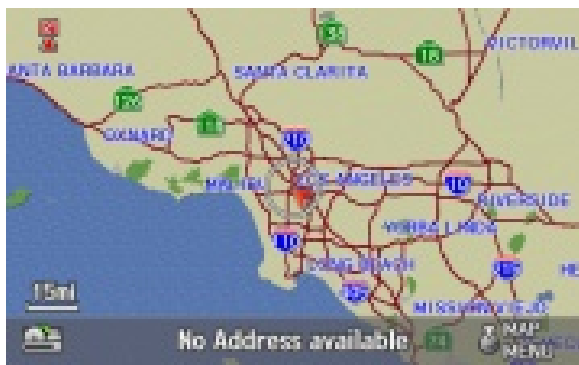
12. The navigation system reboots.



13. The disclaimer screen appears.



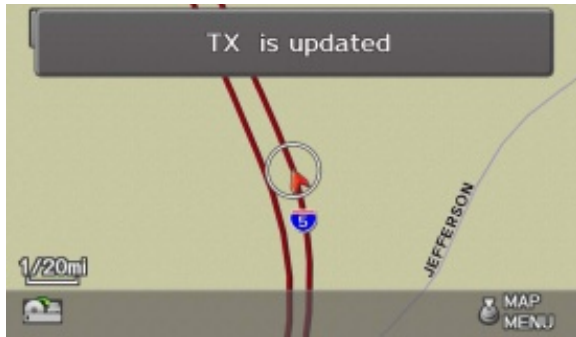
14. The updated map appears after selecting OK.



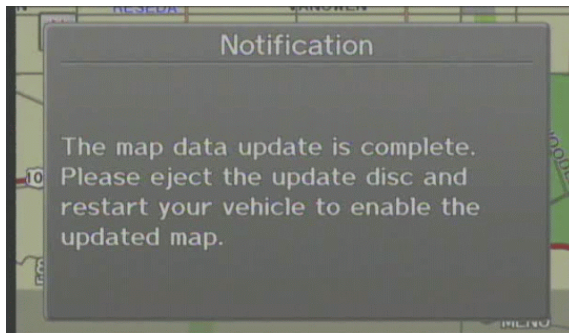
15. A pop-up message shows for 5 seconds: "Will continue to update data in the background."



16. The update process operates in the background. The navigation system updates the map database state by state and displays a pop-up message after each state is updated.



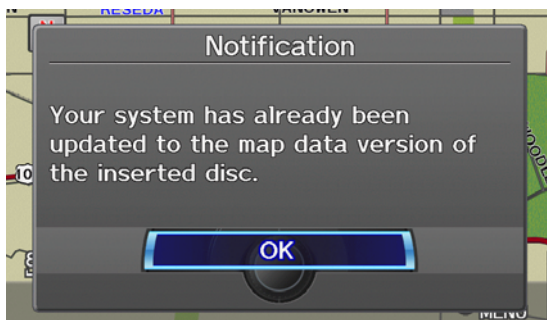
17. When the database update is complete, this message appears: "The map data update is complete. Please eject the update disc and restart your vehicle to enable the updated map."



18. Eject the update disc.
19. Turn the ignition off & on to start the navigation system.

NOTE:

- a. The clock automatically resets after the navigation system is restarted.
- b. If you forget to remove the navigation update disc after the system has finished its update and cycle the key, or if you try to reload the navigation update disc after the update is done, the following notification message appears: "Your system has already been updated to the map data version of the inserted disc."



DESIGN		phone: (510)825-0965	DIMENSIONS: Final 4.75" X 4.719"	PLEASE NOTE:
email: designpolice@aol.com			PRINT: OFFSET / SCREEN	This is a Saddle Stitch booklet.
P/N:	REVISION:	DATE:	LPI: 125 / 120 / 100	
S0031-0228-009	1.7	8.9.10	COLORS: YMCK	



For detailed map coverage information go to the

Acura Navigation Center at:

United States: www.acuranavi.com

1-888-549-3798

Canada: www.acuranavi.ca

1-866-353-6868



© 2009 NAVTEQ. All rights reserved. NAVTEQ Maps is a trademark of NAVTEQ.

© 2010 Acura. All rights reserved.

© 2010 Honda Motor Co., Ltd. All Rights Reserved.

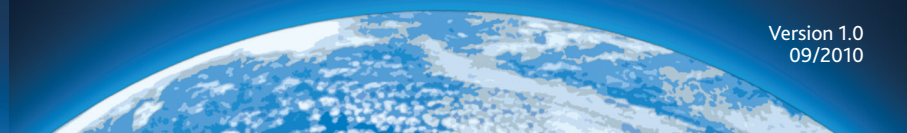


S0031-0228-009

Acura Navigation System

Instruction Guide | Green DVD Update

Version 1.0
09/2010



Acura AN HDD Navigation System Map Update Instructions

IMPORTANT: READ THESE INSTRUCTIONS IN THEIR ENTIRETY BEFORE YOU BEGIN UPDATING THE NAVIGATION SYSTEM.

- Before starting the update, be sure you have the password that came with the map update disc.
- Park your vehicle in a safe, well-ventilated place.
- Do not drive your vehicle at any time during the set-up period.
- If you own a 2010 model, the map update process will begin from Step 1.
- If you own a model from 2011 and up, the map update process will begin from Step 5.
- The map update set-up time is approximately 30 minutes. DO NOT turn off the engine during the set-up period. If the engine is turned off during this time, the map update process will start from the beginning once the engine is started again.
- After the set-up period is complete, the rest of the update will run silently in the background for approximately 5 hours. You may then eject the map update disc from your navigation system.

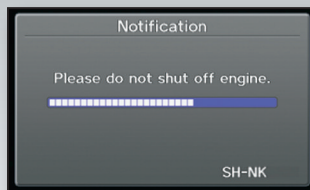
1. Insert the map update disc into the audio system's disc slot.

2. The system will automatically reboot.



Note: If an invalid disc is inserted into the navigation system, the error message E1 will appear. It is located in the error message section of this instruction booklet.

3. As the application update begins, a status notification appears. It will take approximately 7 minutes to complete.

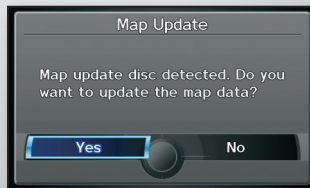


Note: If you eject the disc or turn off the engine at this point, the system will discard the current update progress and start again from the beginning once the engine is restarted.

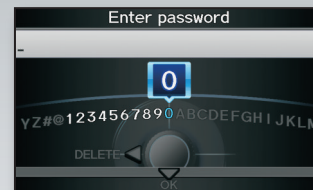
4. After the application is updated, the system will automatically reboot again.



5. A confirmation screen appears. Select "Yes" to continue the update process.

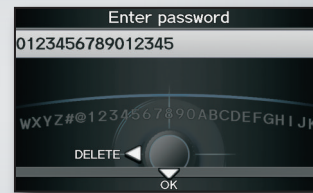


6. Enter the 16 digit password.

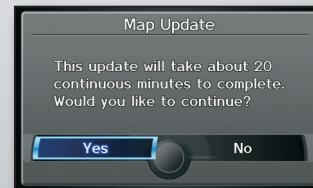


Note: If the password is entered incorrectly, error message E2 will appear. It is located in the error message section of this instruction booklet.

7. After entering the 16 digit password, select "OK".

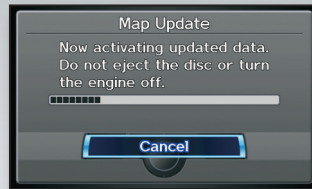


8. A confirmation screen appears. Select "Yes" to continue the update process. It will take approximately 20 minutes to complete.



9. Accessing Map Update...

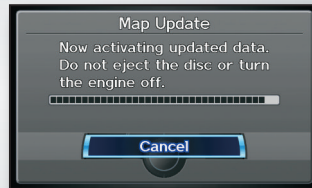
A notification window shows the status of the map data update.



Note: Do not eject the disc or turn off the engine during the map update process. If "Cancel" is pressed during the map update process you will receive error message E3, located in the error message section of this instruction booklet. Select "Yes" and message E5 appears to confirm the cancellation of the update process.

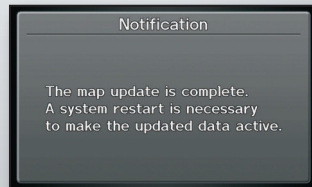
10. Accessing Map Update...

Status notification shows update process is near completion.



Note: If you eject the disc or turn off the engine at this point, the system will discard the current update progress and start again from the beginning once the engine is restarted.

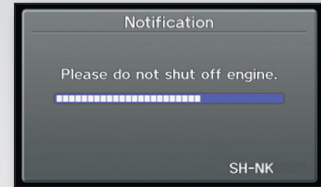
11. After the map update process is completed, a notification window appears to indicate the map update is complete. The system will then automatically reboot to activate the map data.



12. System reboot screen appears.

**13. Updating the application...**

A notification window warns not to shut off car engine.



Note: If you eject the disc or turn off the engine at this point, the system will discard the current update progress and start again from the beginning once the engine is restarted.

14. After the application is updated, the system will automatically reboot once again.



Note: You may now eject the disc. The system will automatically finish the remainder of the update.

15. The system will perform a background software update. This process is to install all of the data to the HDD.

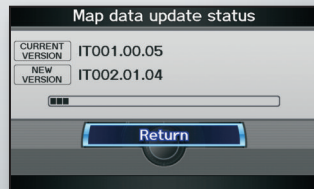


Note: During the background update, a small icon appears on the left bottom side of the screen showing that the system is updating. When the update is complete, this icon will disappear.

16. The updated map is displayed.



17. **Updating in the background...**
It will take approximately 5 hours to complete the process.



Navigation System Map Update Error Messages

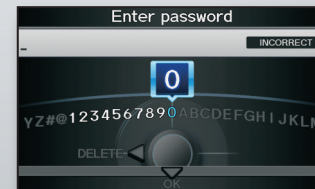
IMPORTANT: DURING THE MAP UPDATE PROCESS YOU MAY EXPERIENCE ANY OF THE FOLLOWING ERROR MESSAGES.

- Before starting the update process, please be sure you have the proper disc ready to insert into the disc drive.
- To avoid cancelling the map update process, do not eject the disc or turn the engine off during the update process.

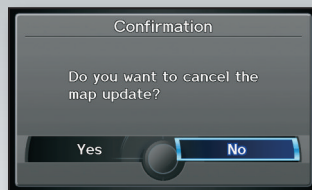
E1. This error message appears if an invalid map update disc is inserted. Please check update disc to make sure it is suitable for your navigation system. If you encounter any problems during this process, please contact Acura Navigation Center for assistance.



E2. This error message appears if an incorrect password is entered. Please check password and try again.



E3. This confirmation message appears if "Cancel" was pressed during the map update. Select "Yes" to confirm the cancellation. Select "No" to continue the map update.



E4. This error message appears if a disc read error occurs during the map update. Please try to clean your map update disc with a soft cloth and gentle motion. Insert the disc again. If the problem persists, contact Acura Navigation Center for assistance.



E5. This confirmation message appears if the disc is ejected during the map update, or if cancellation of the update process had been selected. Press "OK" to continue.

