

Resetting the Power Window Control Unit

Procedure

Reset the power window control unit after doing any of the following actions:

- Power window regulator replacement, removal, or installation.
- Power window motor replacement, removal, or installation.
- Glass run channel replacement, removal, or installation.
- Door glass replacement, removal, or installation.
- Power window master switch replacement.
- Front passenger's power window switch replacement.
- Power is disconnected from the driver's power window master switch or front passenger's power window switch while the power window timer is ON.

NOTE: If the front passenger's power window has lost power when the key off timer is ON, it cannot be operated from the driver's switch and must be reset from the front passenger's power window switch.

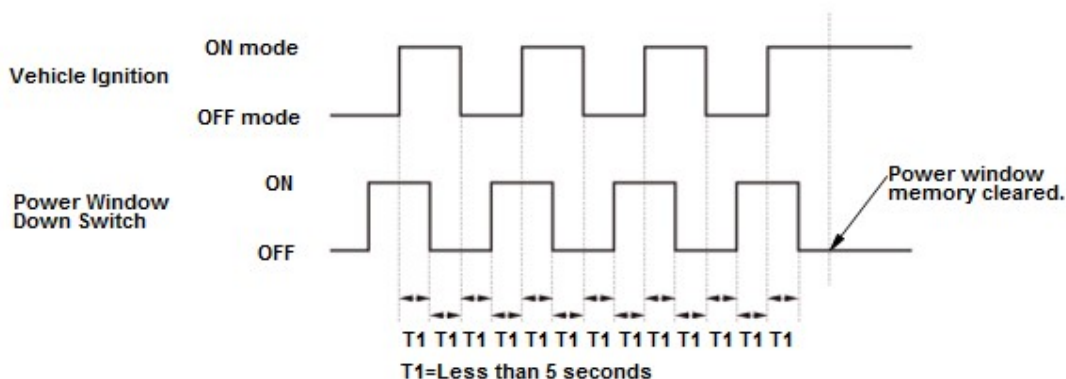
Without HDS

1. Power Window Control Unit - Front Door Reset

1. Press the engine start/stop button to select the ON mode.
2. Move the power window all the way down with the driver's window DOWN switch.
3. Open the driver's door.

NOTE: Steps 4—7 must be done within 5 seconds of each other.

4. Press the engine start/stop button to select the OFF mode.



5. Press and hold the power window DOWN switch.
6. Press the engine start/stop button to select the ON mode.

7. Release the power window DOWN switch.
8. Repeat step 4—7 three more times.
9. Wait at least 1 second.
10. Confirm that AUTO UP and AUTO DOWN do not work. If AUTO UP and DOWN work, go back to step 1.
11. Move the power window all the way down with the power window DOWN switch.
12. Pull up and hold the power window UP switch until the window reaches the fully closed position, then continue to hold the switch for at least 1 second.
13. Confirm that the power window control unit is reset by using the driver's window AUTO UP and AUTO DOWN functions:
 - If the window still does not work in AUTO, repeat the procedure several times, paying close attention to the 5 seconds time limit between steps.
 - If the window still does not work, refer to the master switch input test.

With HDS

1. Power Window Control Unit - Front Door Reset

1. Connect the HDS to the data link connector (DLC).
2. Press the engine start/stop button to select the ON mode, then enter the vehicle's VIN and mileage at the prompts.
3. Select BODY ELECTRICAL from the SYSTEM SELECTION MENU.
4. From the BODY ELECTRICAL SYSTEM SELECT menu, select POWER WINDOWS.
5. From the MODE MENU, select ADJUSTMENT.
6. From the ADJUSTMENT MENU, select POWER WINDOW RESET FOR DRIVER SIDE (PASSENGER'S SIDE).
7. Follow the prompts on the screen.
8. Confirm that the power window control unit is reset by using the power window AUTO UP and AUTO DOWN function.