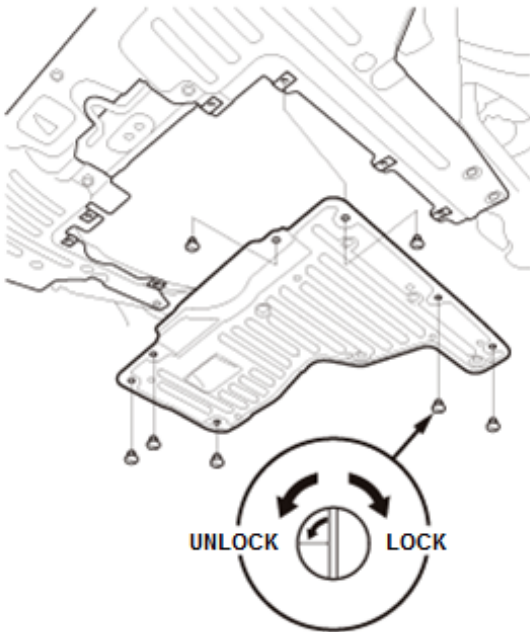


**ATF Replacement****Replacement****NOTE:**

- Keep all foreign particles out of the transmission.
- Be careful not to burn yourself by the hot part.
- In order to refill the ATF for the proper quantity, refill the ATF as soon as possible after draining.

**1. Vehicle - Lift****2. Engine Undercover Plate - Remove****3. Engine - Warm Up**

1. Start the engine, and warm it up to normal operating temperature (the radiator fan comes on twice).
2. Turn the engine off.

**4. ATF - Replace**

NOTE: In order to refill the ATF for the proper quantity, refill the ATF as soon as possible after draining.

1. Remove the filler plug (A) with the sealing washer (B).
2. Remove the drain plug (C) with the sealing washer (D), and drain the ATF until the ATF starts to drip after pouring.

NOTE: Remove metal particles from the magnetic surface of the drain plug.

3. Reinstall the drain plug with a new sealing washer.
4. Refill the transmission with the recommended fluid into the filler plug hole (E) until the ATF overflows. Always use Acura ATF TYPE 2.

NOTE: Using the wrong type ATF can affect shift quality.

**Transmission Fluid Capacity (Reference Capacity):**

**4.1 L (4.3 US qt) at change**

**7.3 L (7.7 US qt) at overhaul**

**Proper ATF level:**

**The ATF is dripping from the filler plug hole with the transmission warmed up.**

5. Temporarily install the filler plug with the sealing washer.

6. Lower the vehicle.

7. Start the engine.

8. While pressing the brake pedal firmly, shift in turn the transmission to P→R→N→D→N→R→P position/mode, and wait for at least 3 seconds to each position/mode.

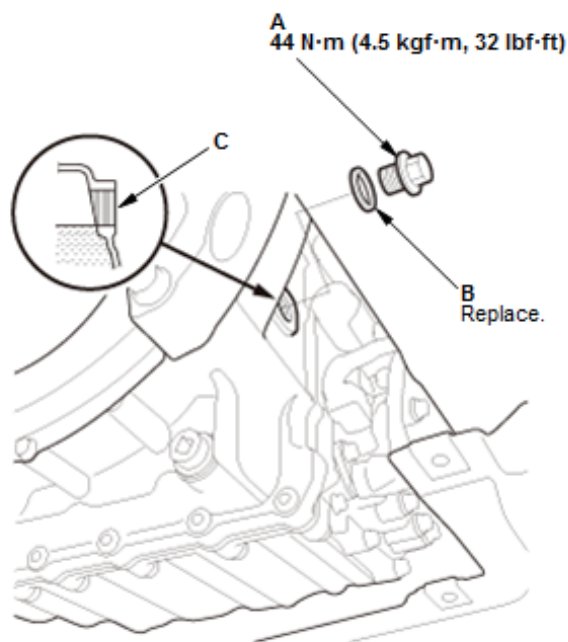
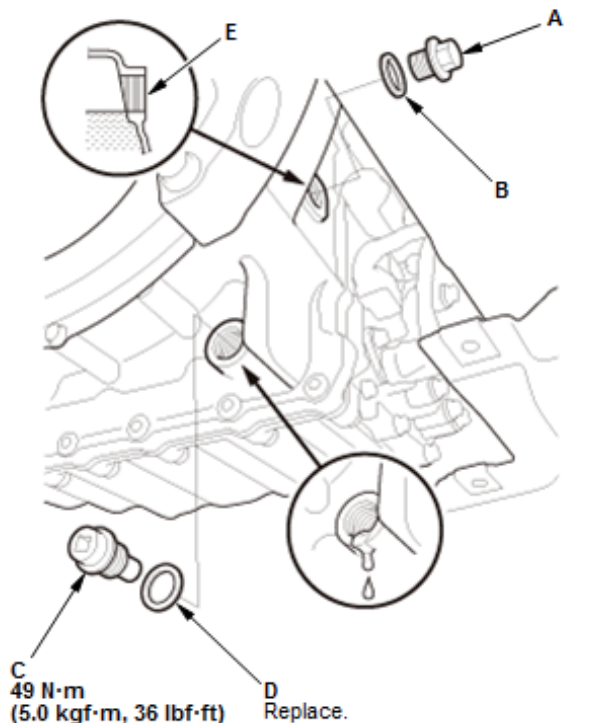
9. Turn the engine off.

10. Raise the vehicle.

11. Remove the filler plug (A) with the sealing washer (B).

12. Make sure the ATF is dripped from the filler plug hole (C).

- If the ATF is pouring, wait until the ATF is slightly dripping from the filler plug hole.
- If no ATF is coming out of the filler plug hole, add the ATF into the filler plug hole until the ATF overflows, then wait until the ATF is slightly dripping from the filler plug hole.



13. Reinstall the filler plug with a new sealing washer.

## 5. HDS - Connect

## 6. Maintenance Minder - Reset (With Maintenance Minder System)

1. If the Maintenance Minder required to replace the ATF, [reset the Maintenance Minder with the gauge \(see "Resetting the Maintenance Minder"\)](#). If the Maintenance Minder did not require to replace the ATF, [reset the Maintenance Minder with the HDS \(see "Resetting the Individual Maintenance Items"\)](#).

## 7. All Removed Parts - Install

1. Install the parts in the reverse order of removal.