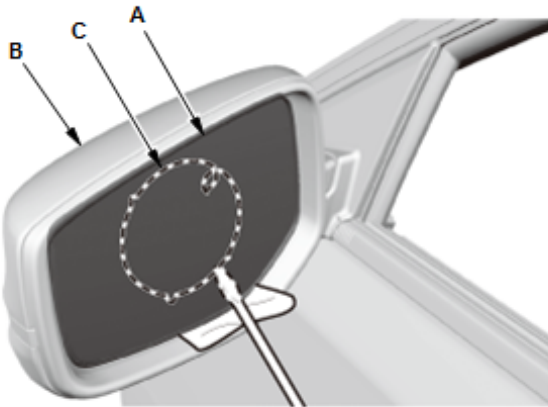


## Mirror Holder Removal and Installation

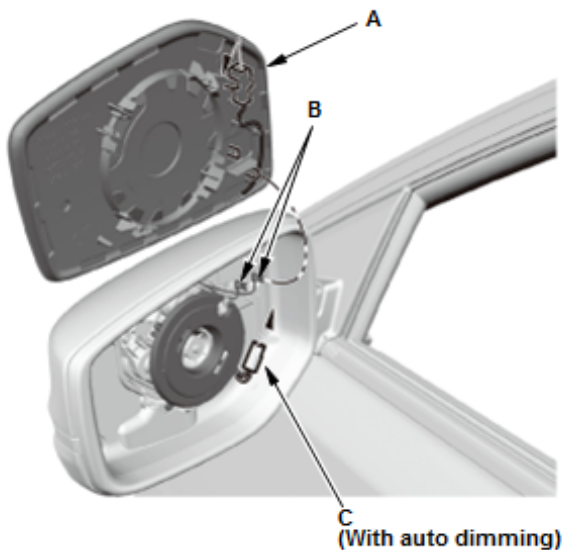
### Removal

#### 1. Mirror Holder - Remove



1. Carefully push on the top edge of the mirror holder (A) by hand.
2. Put a shop towel in the opening between the bottom edge of the mirror holder and the mirror housing (B) to prevent scratches.
3. Insert a flat-tip screwdriver under the mirror holder, and quickly twist the screwdriver to separate the mirror holder from the actuator (C).
4. Insert a flat-tip screwdriver further into the mirror holder and twist it again.

NOTE: Do not pry up on the mirror holder to separate the two parts, as this can cause either the mirror glass or actuator to break.



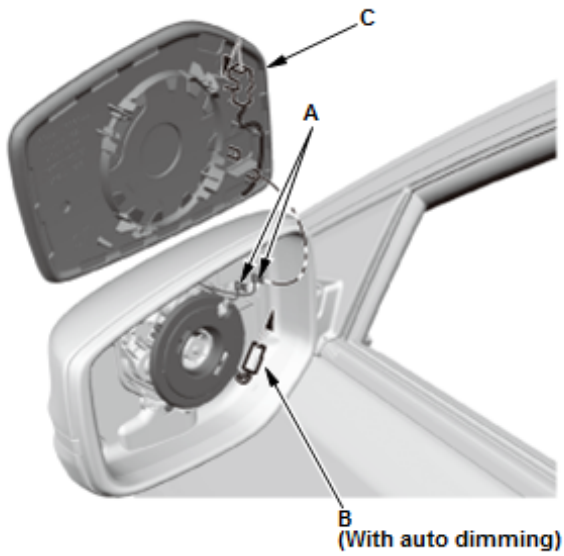
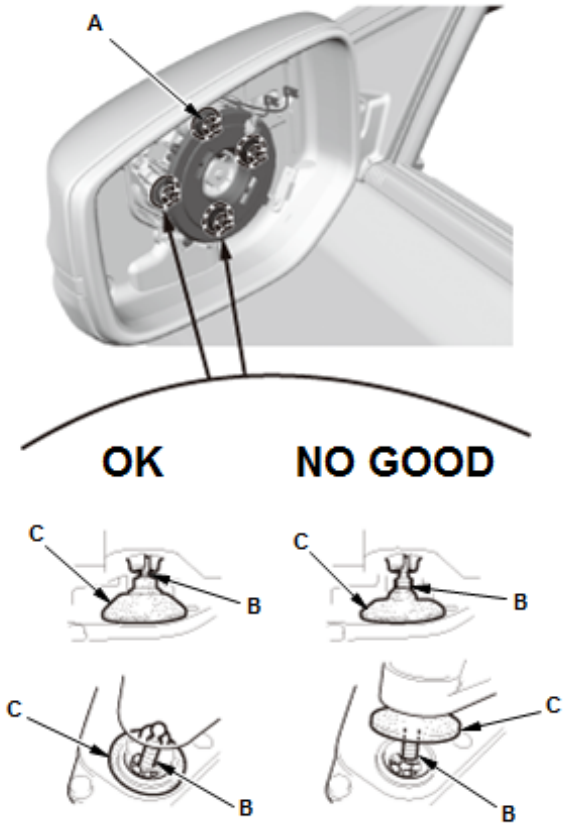
5. Separate the mirror holder (A).
6. Disconnect the connectors (B, C).

### Installation

#### 1. Mirror Holder - Install

1. Before reinstalling the mirror holder to the actuator (A), check the actuator rods (B) and the actuator boots (C).

NOTE: Make sure each actuator rods is inserted into the actuator securely, and each actuator boot is fully seated on the actuator.



2. Connect the connectors (A, B).
3. Install the mirror holder (C).