

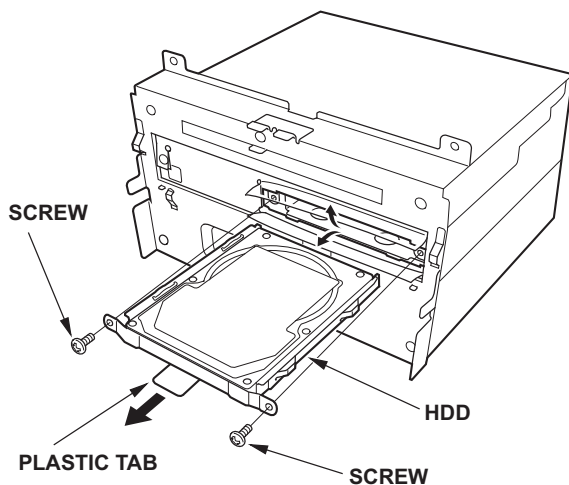
Transfer the HDD When Replacing the Audio-Navigation Unit

Currently Applies To: '09–'10 TL, '10 MDX, and '10 ZDX

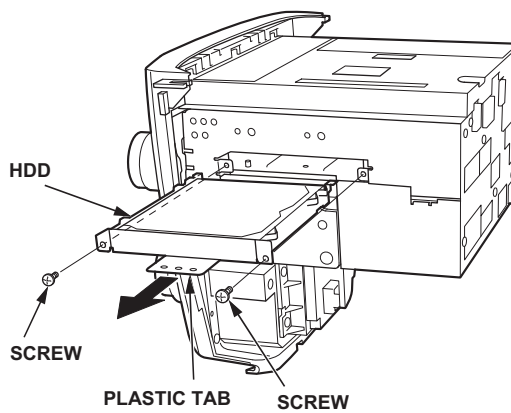
Starting in 2009, we introduced our second-generation hard disc drive (HDD)-based navigation system. The HDD contains all the map and POI data, the navigation and audio system software, the client's settings, and the client's saved music and photos. If you are replacing an audio-navigation unit (after following the proper troubleshooting

procedures, of course), make sure you transfer the HDD to the replacement audio-navigation unit. The replacement audio-navigation unit **does not** come with an HDD. For complete information about removing the HDD, refer to the applicable service manual. (Online, enter keyword **HDD** and select **HDD Removal/Installation** from the list.)

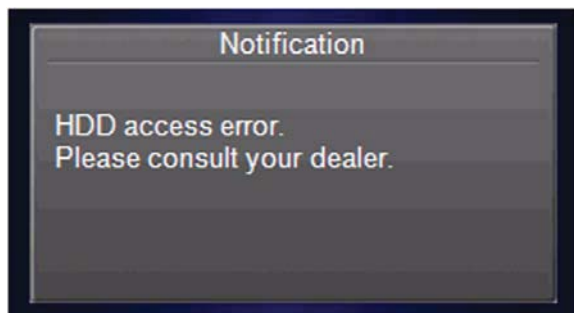
TL (behind the faceplate)



MDX shown (ZDX is similar)



If you forget to transfer the HDD to the replacement navigation unit, you'll see an error message when you reconnect the audio-navigation unit to the vehicle.



ACURA
ServiceNews

©2010 American Honda Motor Co., Inc. - All Rights Reserved. Published by AHM Parts and Service Communications, 1919 Torrance Blvd., Torrance, CA 90501-2746. All suggestions become the property of American Honda Motor Co., Inc.; sending a suggestion gives Honda permission to publish it without further consideration.



BSN 43595 (1003)