

Keyless Access Remote Doesn't Lock Into Its Slot and Won't Lock the Doors

SYMPTOM

The keyless access remote doesn't lock into its slot in the dashboard, and its buttons won't lock the doors. In addition, the interior beeper sounds when you open the driver's door, even though the engine is off and the remote is removed from its slot.

PROBABLE CAUSE

The keyless access remote was forcefully removed from its slot in the dashboard when the vehicle was left in ACCESSORY mode.

CORRECTIVE ACTION

Reposition the carriage inside the keyless access remote slot.

PARTS INFORMATION

No parts are needed for this repair.

WARRANTY CLAIM INFORMATION

In warranty: The normal warranty applies.

Operation Number: 0500A1

Flat Rate Time: 0.2 hour

Failed Part: P/N 36920-TK4-A01

Defect Code: 00401

Symptom Code: 08201

Template ID: 08-053A

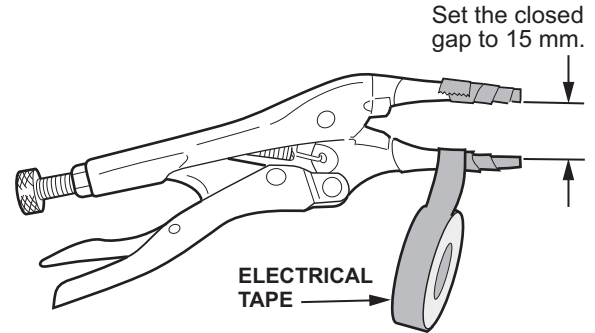
Skill Level: Repair Technician

Out of warranty: Any repair performed after warranty expiration may be eligible for goodwill consideration by the District Parts and Service Manager or your Zone Office. You must request consideration, and get a decision, before starting work.

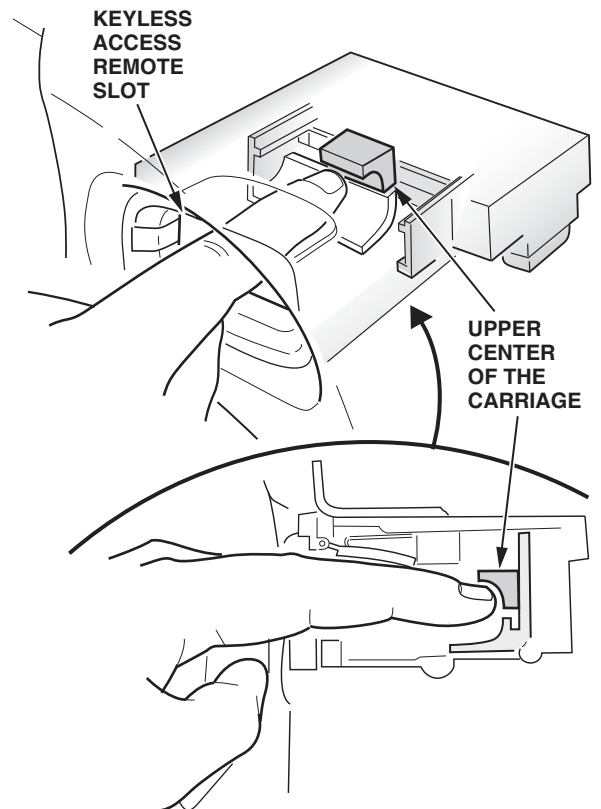
REPAIR PROCEDURE

NOTE: To do this repair, you need a 4-inch, long-nose locking pliers tool (Vise Grip tool number 4LN, or equivalent)

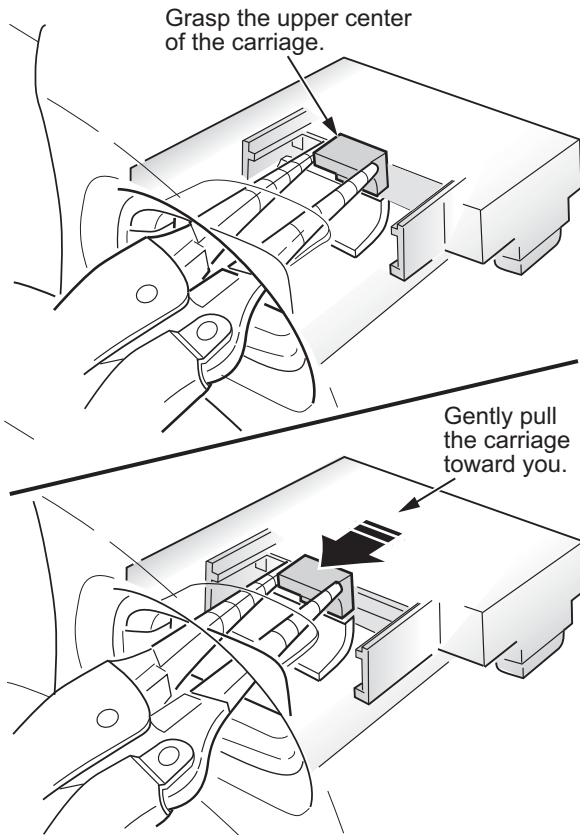
1. Wrap the tips (at least 10 mm) of the long-nose locking pliers with electrical tape. Set the closed gap of the pliers to about 15 mm.



2. Make sure the ignition is off (LOCK mode), the green indicator on the ENGINE START/STOP button is off, and the shift lever is in P.
3. Lift the flap on the keyless access remote slot with your finger. Inside the slot, locate the upper center of the carriage.



4. Grasp the upper center of the carriage with your pliers, and gently pull the carriage until it slides towards you.



5. Check the operation of the keyless access remote slot:
 - Insert the keyless access remote into its slot.
 - With your foot off the brake pedal, press the ENGINE START/STOP button once; this puts the vehicle in ACCESSORY mode. The keyless access slot will click, locking the remote in place. The remote should not be removable.
 - With your foot still off the brake pedal, press the ENGINE START/STOP button twice; this puts the vehicle in LOCK (off) mode. The keyless access slot will click again, unlocking the remote.
 - Pull the remote out of its slot.
6. Exit the vehicle, and make sure the Lock, Unlock, and Trunk buttons on the remote work correctly.