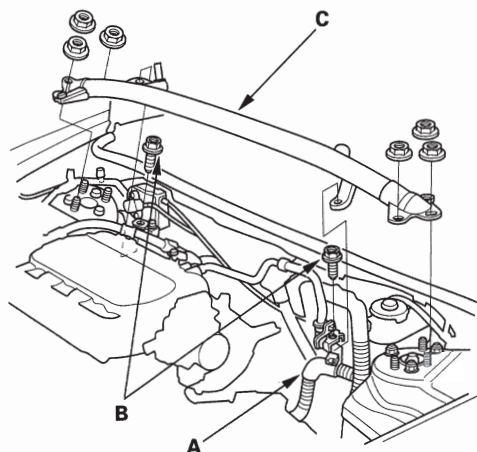


# Engine Assembly

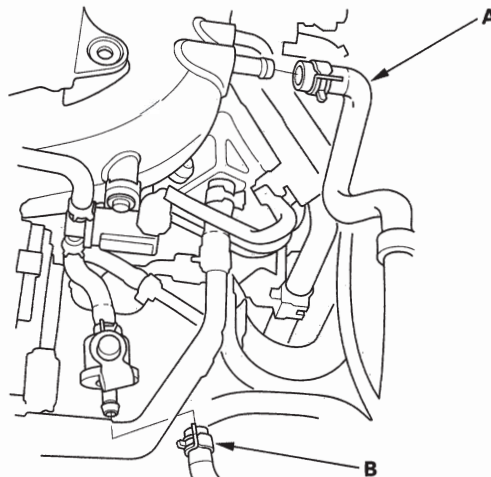
## Engine Removal (cont'd)

15. Remove the harness clamp (A), and remove the two 6 mm bolts (B), then remove the strut brace (C).

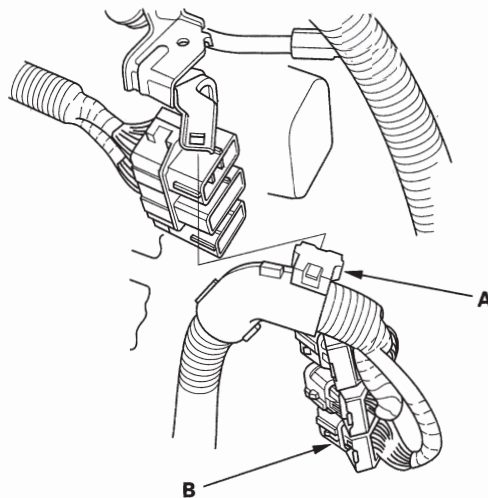


16. Relieve fuel pressure (see page 11-245).

17. Remove the brake booster vacuum hose (A), evaporative emission (EVAP) canister hose (B).



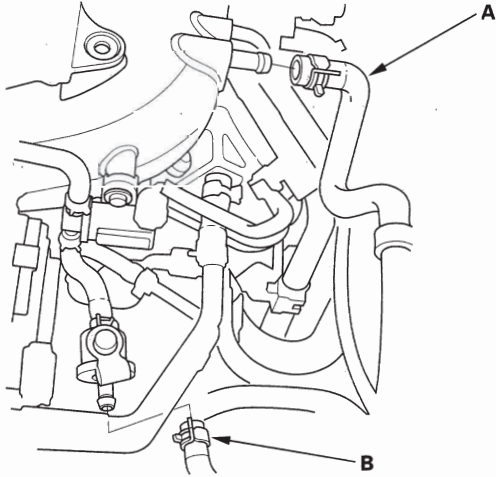
18. Remove the harness clamp (A), and disconnect the engine wire harness connectors (B) on the left side of the engine compartment.



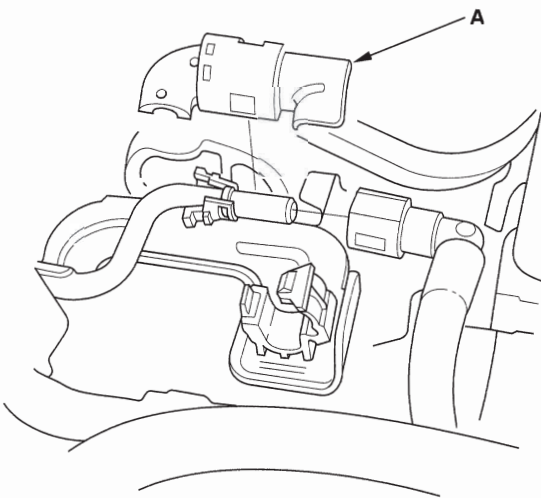
# Engine Assembly

## Engine Installation (cont'd)

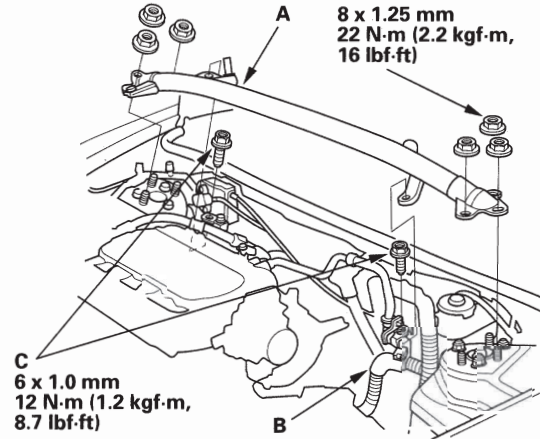
46. Install the brake booster vacuum hose (A), and evaporative emission (EVAP) canister hose (B).



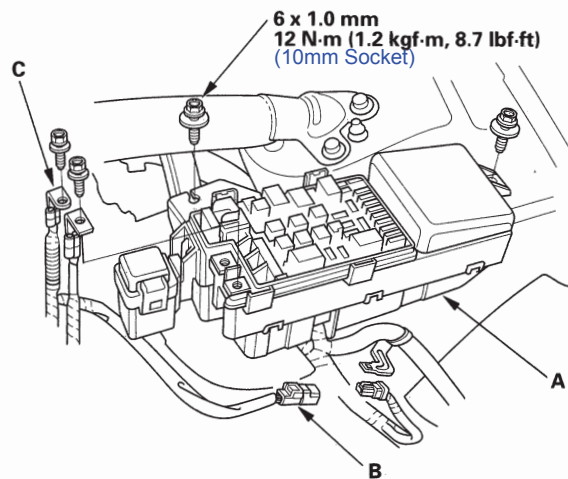
47. Connect the fuel feed hose (see page 11-253), then install the quick-connect fitting cover (A).



48. Install the strut brace (A), then install the harness clamp (B), and install the two 6 mm bolts (C).



49. Install the under-hood fuse/relay box (A), and connect the harness connector (B).



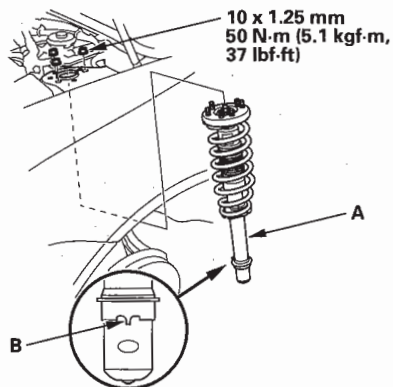
50. Install the battery cable (C).

# Front Suspension

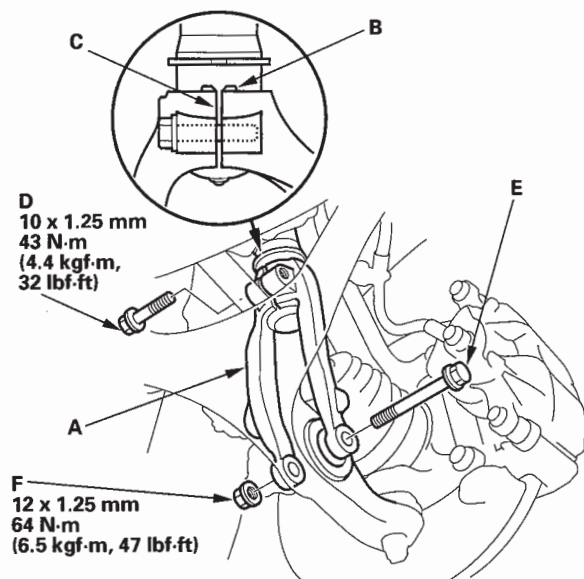
## Damper/Spring Replacement (cont'd)

### Installation

1. Position the damper assembly (A) in the body with the aligning tab (B) facing inside, then loosely install the flange nuts.



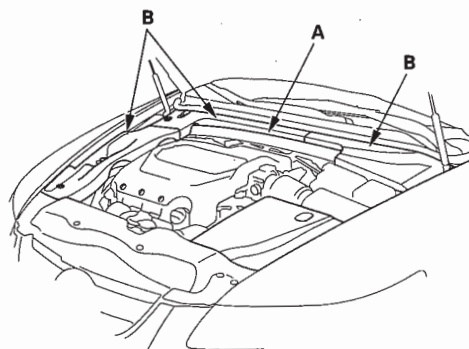
2. Install the damper fork (A) over the driveshaft and onto the lower arm. Install the front damper in the damper fork so the aligning tab (B) is aligned with the slot (C) in the damper fork.



3. Loosely install the damper pinch bolt (D) into the damper fork.
4. Install the flange bolt (E) to the damper fork and lower arm, then lightly tighten the new damper fork mounting nut (F).

NOTE: Use a new damper fork mounting nut on reassembly.

5. Place the floor jack under the lower arm, and raise the suspension to load it with the vehicle's weight.
6. Tighten the flange nuts on the top of the damper to the specified torque values.
7. Tighten the damper pinch bolts to the specified torque value.
8. Tighten the flange nut on the damper fork to the specified torque value.
9. Clean the mating surface of the brake disc and the inside of the wheel, then install the front wheel.
10. Install the strut brace (A) with the vehicle on the ground (see page 20-123).



11. Install the engine compartment covers (B).