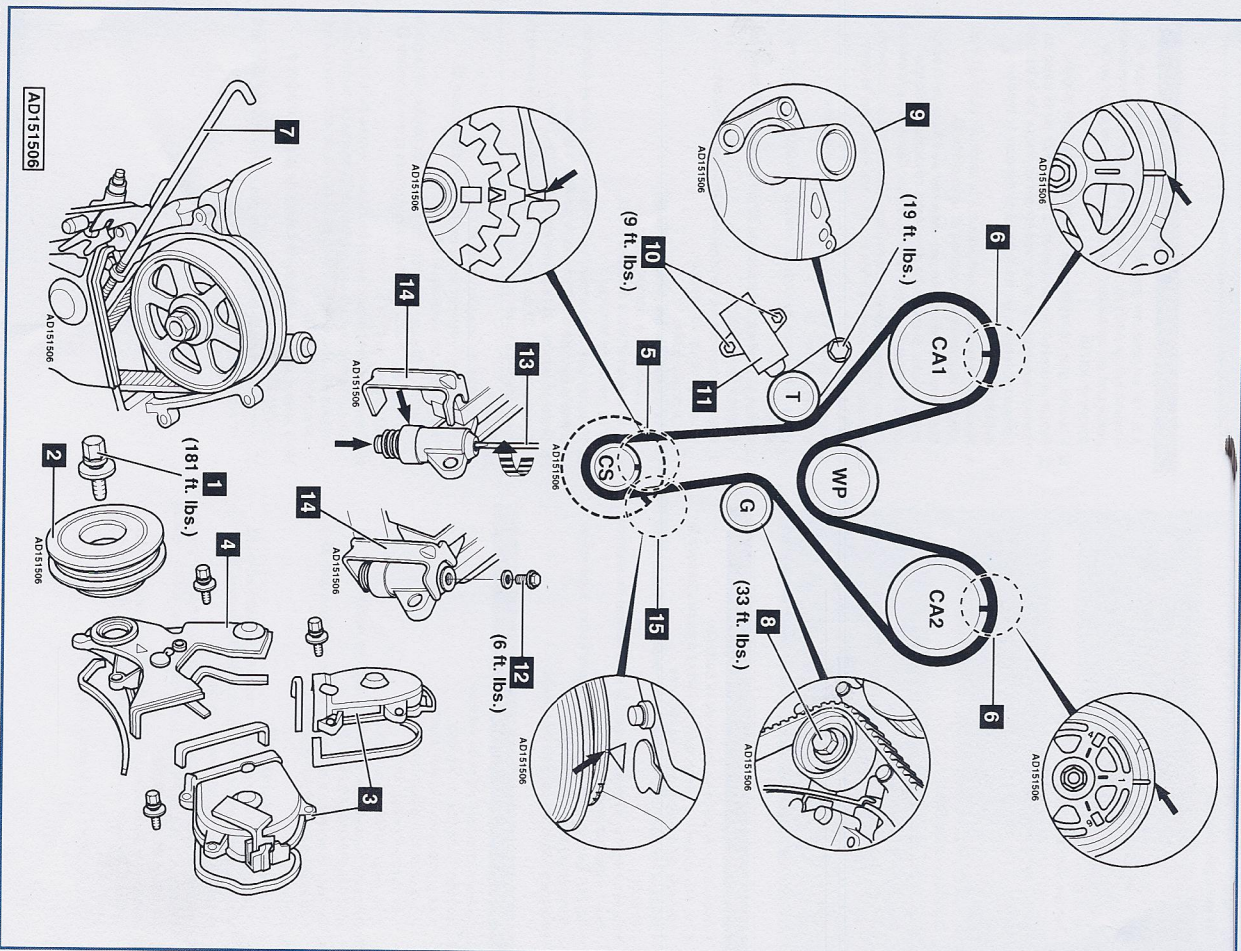


Model:	Year:	Model:	Year:
Accord 3.0L V6	1998-02	Odyssey 3.5L V6	1999
CL 3.0L V6	1997-99	TL 3.2L V6	1999

Engine Identification: J30A1, J32A1, J35A1



ENG

Replacement Interval Guide

The OEM recommends replacement every 105,000 miles or 84 months, whichever occurs first, under normal conditions or every 60,000 miles or 48 months under adverse conditions. The previous use and service history of the vehicle must always be taken into account.

Check For Engine Damage

CAUTION: This engine has been identified as an INTERFERENCE engine in which the possibility of valve-to-piston damage in the event of a timing belt failure is MOST LIKELY to occur. A compression check of all cylinders should be performed before removing the cylinder head.

Labor Times - hrs

Remove & Install:	4.30
Accord	4.20
CL/TL	2.70
Odyssey	

Special Tools

- Crankshaft pulley holder - Honda No.07MAB-P3010A.
- Crankshaft pulley roller handle - Honda No.07JAB-001020A.
- Crankshaft pulley bolt socket - Honda No.07JAA-001020A.
- Tensioner retaining clamp - Honda No.14540-P8A-A01.

Special Precautions

- Disconnect battery ground cable.
- Do NOT turn crankshaft or camshaft with timing belt removed.
- Turn spark plugs to ease turning engine.
- Turn crankshaft in normal direction of rotation (unless otherwise stated).
- Do NOT turn crankshaft via camshaft or other sprockets.
- Observe all tightening torques.

Removal

1. Raise and support front of vehicle.
 2. Support engine and remove:
 - Front lower splash guard.
 - Accessory drive belts.
 - Right hand engine mount.
 - Oil dipstick & pipe.
 3. Hold the crankshaft pulley with tool Nos.07MAB-P3010A/07JAB-001020A.
 4. Undo and remove the crankshaft pulley bolt **1** using tool No.07JAA-001020A.
 5. Remove:
 - Crankshaft pulley **2**.
 - Timing belt upper covers **3**.
 - Timing belt lower cover **4**.
 - Right hand engine mount bracket.
 6. Turn the crankshaft clockwise until No.1 cylinder at TDC of compression stroke with timing marks **5** & **6** aligned.
 7. Remove one battery clamp bolt and screw into the auto tensioner bracket to retain tensioner in position **7**.
- NOTE: Tighten bolt by hand only.**
8. Loosen the guide pulley bolt **8** 5 or 6 turns.
 9. Remove the timing belt.

Installation

NOTE: If installing new water pump, ensure auto tensioner bracket collar is properly installed with flange seated on water pump **8.**

1. Ensure the timing marks **5** & **6** are aligned.
2. Remove the battery clamp bolt **7** from the auto tensioner bracket and reinstall to battery tray.
3. Undo and remove bolts **10** and remove auto tensioner **11**.
4. Hold auto tensioner upright in a suitable vise and remove plug and washer **12**.

NOTE: Be careful not to allow any oil to spill from the auto tensioner. If oil has leaked, drain completely and refill with 0.22 fl. oz. of engine oil.

5. Compress auto tensioner by using flat bladed screwdriver in hole and turning clockwise **13**.
6. Retain auto tensioner pushrod in position with clamp No.14540-P8A-A01 **14**.
7. Install plug **12** in auto tensioner and torque to 6 ft. lbs.
8. Install auto tensioner **11** to engine and torque bolts **10** to 9 ft. lbs.
9. Install timing belt to the sprockets and pulleys in the following order:
 - Crankshaft sprocket.
 - Guide pulley.
 - Camshaft sprocket (CA2).
 - Water pump pulley.
 - Camshaft sprocket (CA1).
 - Tensioner pulley.
10. Ensure timing belt taut between sprockets on non-tensioned side.
11. Torque guide pulley bolt **8** to 33 ft. lbs.
12. Remove the clamp **14** from auto tensioner to allow tensioner to operate.
13. Install:
 - Engine mounting bracket.
 - Timing belt lower cover **4**.
 - Crankshaft pulley **2**.
14. Apply engine oil to the crankshaft pulley bolt threads and face, then torque the bolt **1** to 181 ft. lbs.
15. Turn the crankshaft six turns clockwise until No.1 cylinder at TDC of compression stroke with white timing mark (TDC) on crankshaft pulley aligned with pointer **5**.
16. Ensure the camshaft sprocket timing marks **5** are aligned.
17. Install components in reverse order of removal.

IMPORTANT: To enhance timing belt system performance replace all tensioners and pulleys during timing belt replacement.