

# ACURAZINE

the unofficial Acura enthusiast resource

AcuraZine Community > AcuraZine TL/TLX Community > Second Generation TL (1999-2003)

Welcome, VDo.  
You last visited 12-12-2012  
You have 0 Unread Messages

## FAQ: 06-07 AV6 Transmission 'Swap'

Settings   FAQ   Community ▾   Calendar   New Posts   Search ▾   Quick Links ▾   Experience   Used Cars   Vendor Directory   Log Out

Search

**AcuraPartsWorld.com** Call 888-822-9716  
Great Prices - Free Shipping Technical Advice - Open 7 Days  
Mention AcuraZine to Receive 25% Off & Free Shipping on Most Parts  
AcuraPartsWorld Leading The Way For Acura Parts - The On-Line Division of Acura of Westchester

New Reply

Page 1 of 6 1 2 3 4 5 6 >

g+1 2   Tweet 0

View First Unread   LinkBack ▾   Thread Tools ▾   Search this Thread ▾   Rate Thread ▾

02-13-2014, 04:57 PM

#1

666wokker  
Registered Member



**Trader Rating:** (0)  
Join Date: Feb 2012  
Location: Detroit, MI  
Age: 35  
Posts: 165  
Thanks: 29  
Thanked 44 Times in 18 Posts  
Points: 3,194, Level: 34  
Activity: 0%

### FAQ: 06-07 AV6 Transmission 'Swap'

#### FAQ: 06-07 AV6 Swap

**First, I would like to thank NVA-AV6 (Paul) for the info posted so long ago that made this swap a reality beyond theory.**

History:

I first found out about this swap here on Acurazine a couple years ago. At the time there was not as much information on here as there is now, so it took quite a bit of research to dig up the information I needed to equip myself with to do this job. However, I did manage to find everything needed, and realized, this only sounds more intimidating than it really is!

So I bit the bullet and got everything I needed to do it, as the 03 TL I 'just bought' had a blown trans, and I wanted it fixed RIGHT!

I did the swap, and it worked perfectly!

I've been getting alot of questions over the last couple years on how to do this job, and over the last couple years I have done 6 swaps for people, all of which were successful!

And now, on to the info!

#### REQUIREMENTS

**First**, this only bolts on to a 00-03 TL, the 99 has a 4 speed trans and totally different wiring harnesses and ECU. \*IF\* you wanted it to work on a 99, you would have to change out the engine/trans wiring harnesses, dashboard harnesses and ECU.... At that point you may as well swap in a 6mt for negligibly more \$\$\$.

**Second**, The AV6 trans you will need to source is from the 06-07 v6 3.0 Accord, coupe or sedan does not matter, just make REAL sure the trans is a 5at from a 3.0 v6!

**Third**, get everything you need for the swap in advance! It makes it alot less brutal when you don't have to source a part or gasket in the middle of the job!

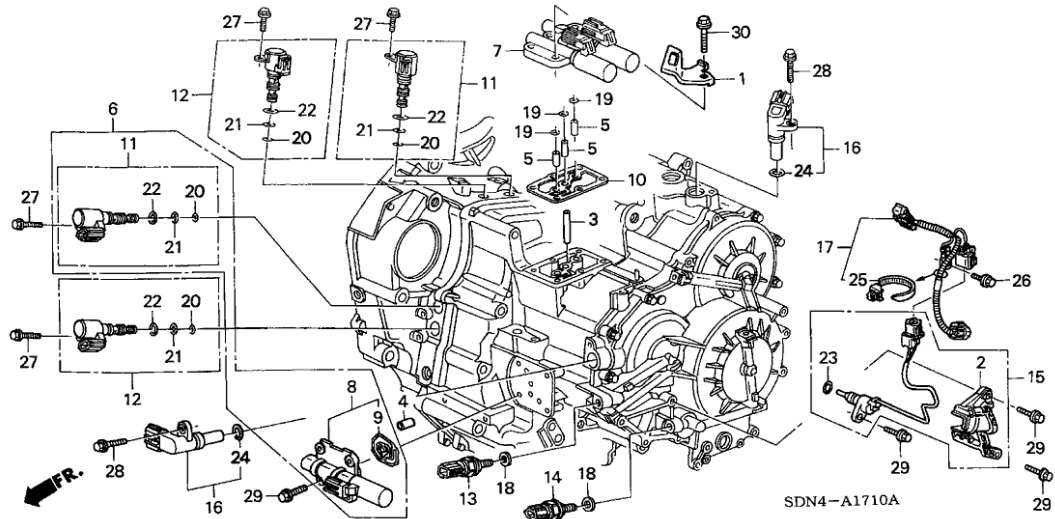
Now, let's get to what needs to be done!

Oh, and I am going to assume you know how to take a trans out and put one in, because THAT is a whole other FAQ!

#### Items needed to 'swap'!

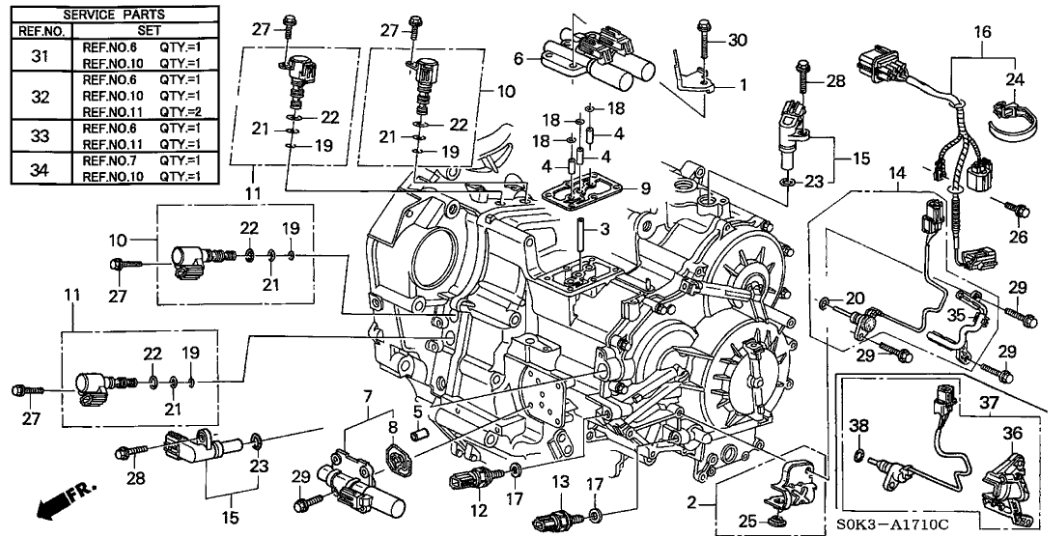
**FIRST** The trans harness from the AV6 trans will not work, it has a different connector to tie into the engine harness, you have to use the one from the TL - this harness connects to the trans temp sensor and clutch pressure switch.

#### AV6 Diagram:



[^...#17 is what needs to come off the AV6 trans---^](#)

**TL Diagram:**



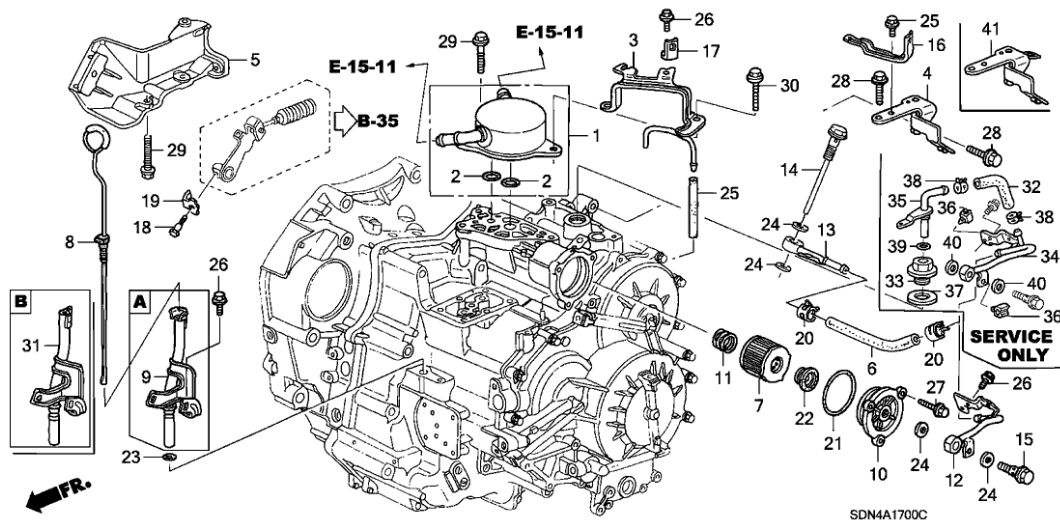
[^...#16 is what you need to keep and swap to the AV6 trans in place of #17 in the AV6 diagram.---^](#)

**SECOND** The oil warmer on the top of the AV6 trans is not the same as the TL, it has different size coolant hoses than the TL, and they are pointed in the wrong directions for a 'bolt on' replacement. It is much easier to simply take the assembly off the TL trans and transplant it to the AV6 trans.

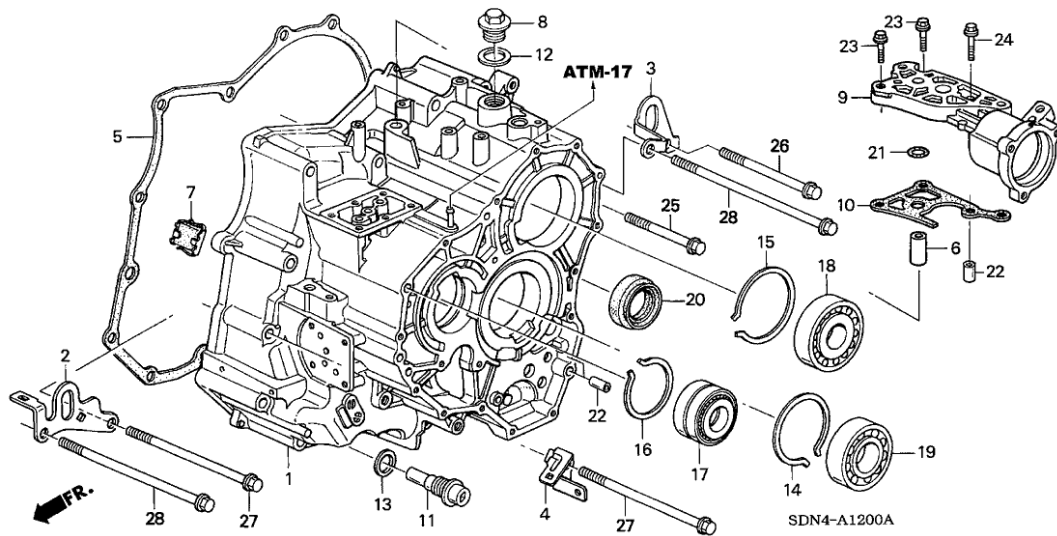
Don't let this part hinder your efforts, they both interchange perfectly without any modifications! Make sure to clean the gasket off very carefully, as putting trash into fluid passages is BAD!

\*\*\* This is the 'hardest' part of this swap, and it's not hard! \*\*\*

**AV6 Diagrams:**

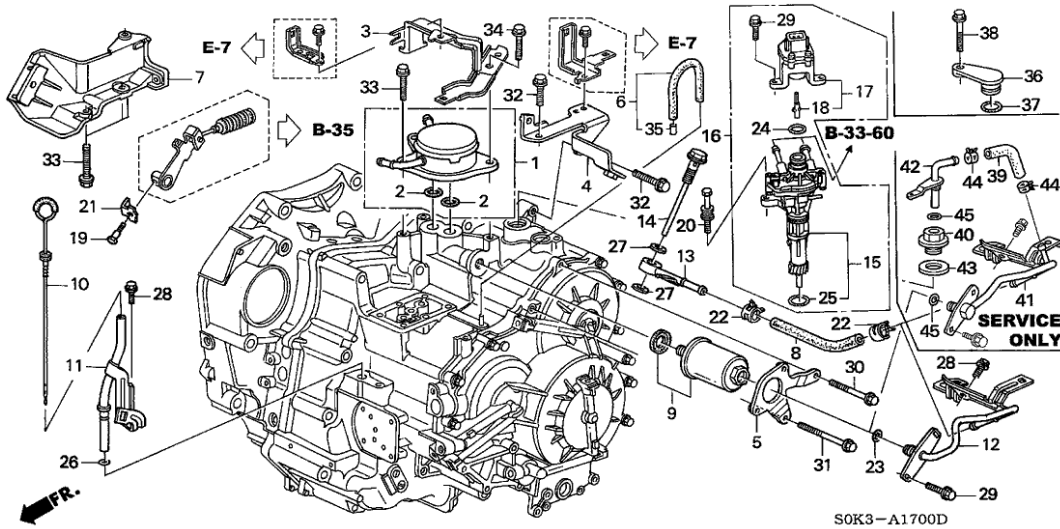


^...In this diagram it shows the ATF warmer (#1), filter assembly, and lines (#'s 11, 7, 22, 21, 10, 24, 12, 15, 26, 20, 6, 13, 14)- remove these from the AV6 trans.---^

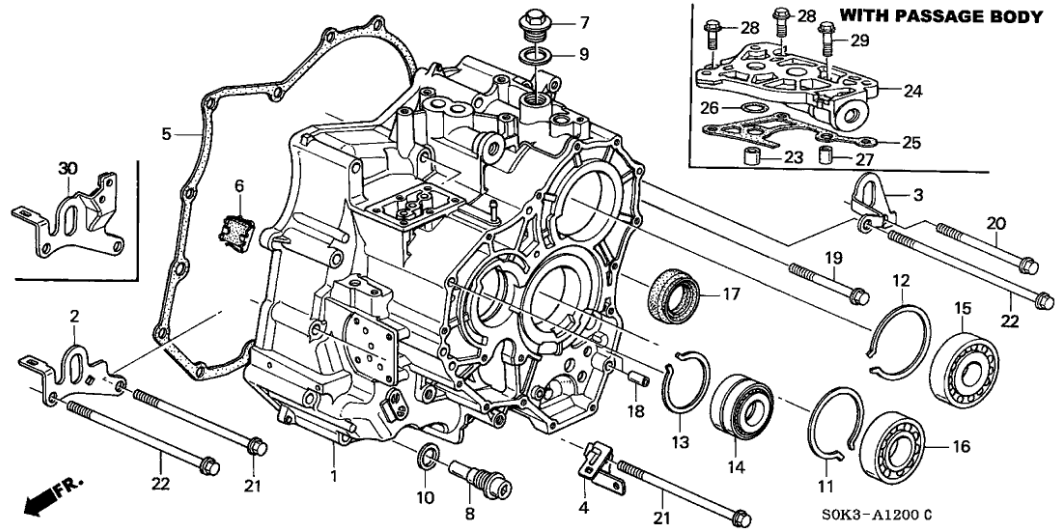


^...In this diagram is the assembly the ATF warmer bolts to (#'s 6, 22, 10, 21, 9, 23, 24) - remove these from the AV6 trans.---^

**TL Diagrams:**



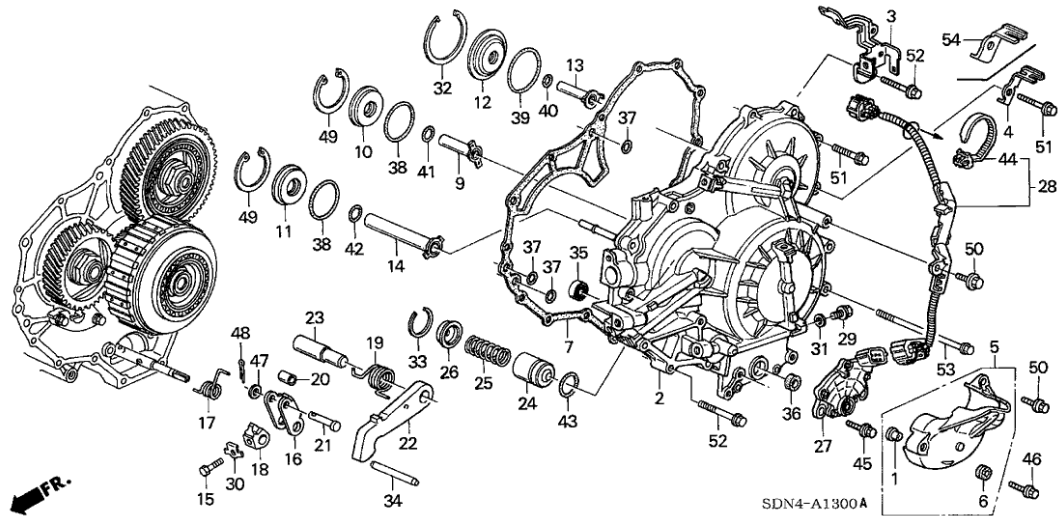
^...In this diagram it shows the ATF warmer (#1), filter (#9 - Buy a new one!!!!) and lines (12, 13), remove these from the TL trans, clean them out REAL GOOD, and save to install on the AV6 trans - now, chances are, you have an oil jet kit installed in place of the direct line from the filter to the back of the trans - that's okay! Just cut the oil jet kit out of the lines, flare the cut lines and install a hose in it's place between the 2 cut lines, just make sure your hose is long enough to make it all the way around - just eyeball it based on the original length of the line. Either that or just buy the new lines without the oil jet kit in-between.



^...In this diagram is the passage body (#'s 23, 24, 25-(Buy this gasket new!!!), 26, 27, 28, 29) the ATF warmer and filter bolt on - remove this and save to install on the AV6 trans.---^

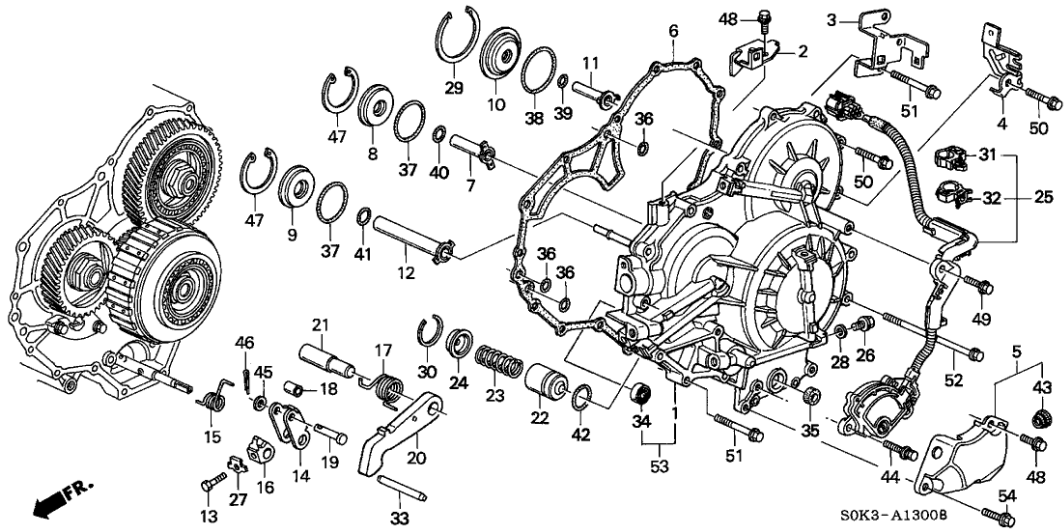
**THIRD** The trans range switch from the AV6 trans will not work, it has a different connector than the TL range switch - take the one off the TL trans, and install it on the AV6 trans.

**AV6 Diagram:**



^...In this diagram #'s 5, 27, and 28 need to come off the AV6 trans...^

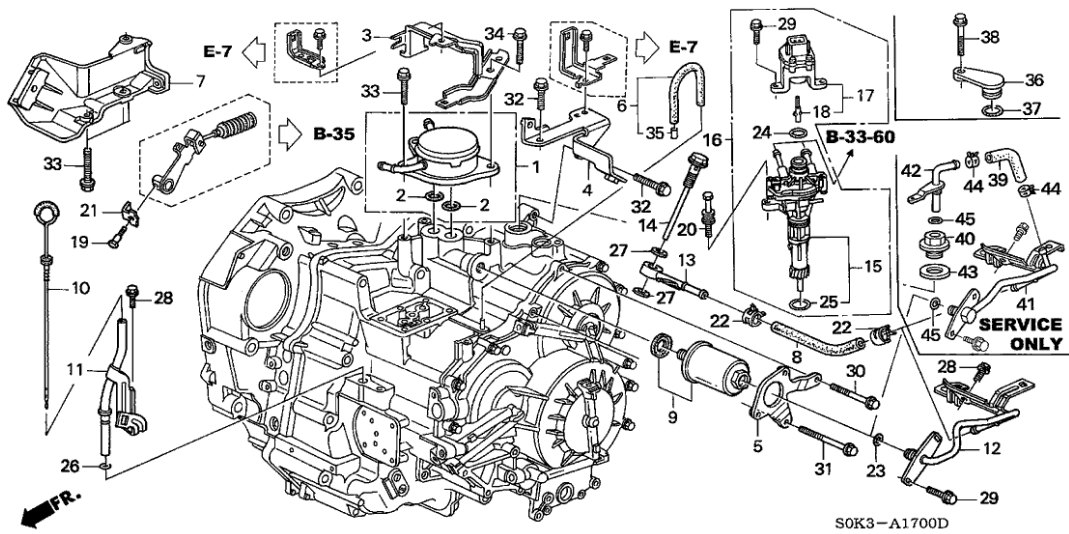
**TL Diagram:**



[^...In this diagram #'s 5 and 25 need to come off the TL trans and be installed on the AV6 trans - It does need to be adjusted to read the gears correctly, do this after the job is mostly done and the car can be turned on, key on-engine off....^](#)

**FOURTH - For TL-p only!** You will need to loop the lines coming off the rack going to the power steering assist assembly on the TL trans, the AV6 trans does not have the hole in it for the sensor.

**TL Diagram:**



[# 16 is the sensor assembly - cut the lines off the sensor and install a 2-way barb fitting between the lines with clamps, or take the lines off the rack and install 1 line looped....^](#)

Here's a pic of what it'll look like looped on the rack



**ALWAYS REMEMBER! NEVER REUSE YOUR OLD TL TORQUE CONVERTER!**

**ALWAYS** use the **AV6 torque converter** that was supplied with the trans, or buy a new one!

**That's it! Nothing more to it, direct bolt-on, little to no modification, just a bit of parts swapping between the two transmissions!**

*Last edited by fsttym1; 02-14-2014 at 08:03 AM.*



**The Following 24 Users Say Thank You to 666wokker For This Useful Post:**

03blackbeast (02-14-2014), 3.2Tlc (02-14-2014), B.TL (05-16-2014), Blindsight (10-16-2014), Brandle34 (03-13-2014), deematic (11-23-2014), ErickUa5 (02-14-2014), ferGburG (02-22-2014), hotclick56 (09-14-2014), littlebulldog (03-31-2014), MarcDavidoff (02-13-2014), Memphlow (02-13-2014), menk6154 (05-15-2014), Ndanny (06-11-2014), peewizzle (03-27-2014), pwehmeier (02-14-2014), RONE (02-16-2014), RTH (07-26-2014), Sapiophile75 (05-05-2014), [Stephen00TL](#) (02-13-2014), the-G-ride (02-17-2014), Tradrod (08-10-2014), victus1 (02-16-2014), YeuEmMaiMai (10-25-2014)

02-13-2014, 05:50 PM

**MarcDavidoff**  
Registered Member

Nice write up! Thanks for taking the time to do it!

#2