

**REMOVAL & INSTALLATION > REAR BRAKE PAD REMOVAL AND INSTALLATION >
REMOVAL**

Courtesy of HONDA, U.S.A., INC.

Frequent inhalation of brake pad dust, regardless of material composition, could be hazardous to your health.

- Avoid breathing dust particles.
- Never use an air hose or brush to clean brake assemblies. Use an OSHA-approved vacuum cleaner.

1. Brake Fluid - Remove

- | |
|--|
| 1. Remove some brake fluid from the master cylinder. |
|--|

2. Vehicle - Lift

- | |
|------------------------------------|
| 1. Raise and support the vehicle . |
|------------------------------------|

3. Rear Wheels - Remove

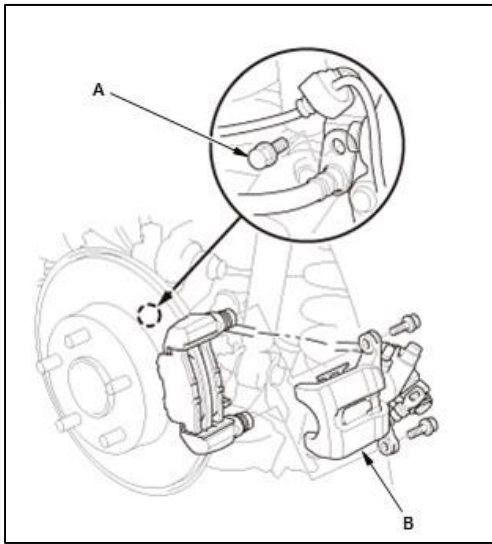
- | |
|------------------------------|
| 1. Remove both rear wheels . |
|------------------------------|

4. Brake Pad - Remove

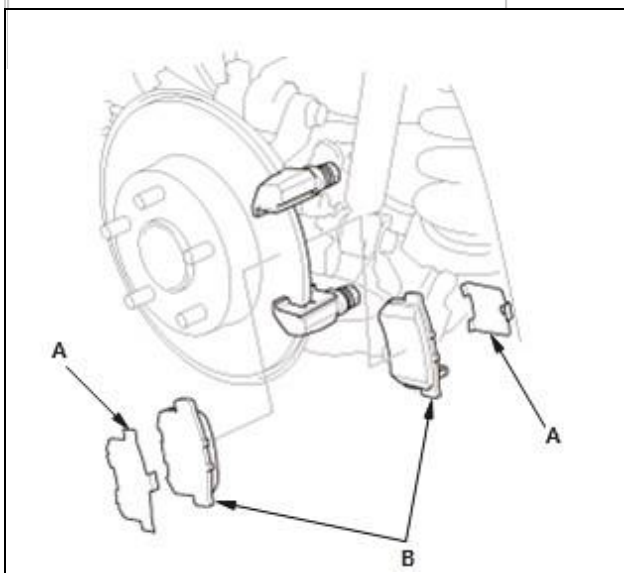
- | | |
|--|---|
| | <ol style="list-style-type: none"> 1. Remove the brake hose mounting bolt (A) 2. Remove the caliper body (B). |
|--|---|

NOTE:

- | | |
|--|--|
| | <ol style="list-style-type: none"> 1. Do not twist the brake hose and the parking brake cable to prevent damage. 2. Check the hose and the pin boots for damage and deterioration. |
|--|--|

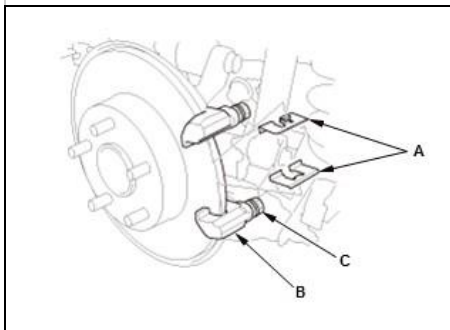


Courtesy of HONDA, U.S.A., INC.



3. Remove the pad shims (A) and the brake pads (B).

Courtesy of HONDA, U.S.A., INC.



4. Remove the pad retainers (A)
5. Clean the caliper bracket (B) thoroughly; remove any rust, and check for grooves and cracks.
6. Verify that the caliper pins (C) move in and out smoothly. Clean and lube if needed.

Courtesy of HONDA, U.S.A., INC.

5. Brake Disc - Inspect

1. Inspect the brake disc for runout, thickness, and parallelism - Refer to: Front Brake Disc Inspection (2013-15), or Front Brake Disc Inspection (2016-19) .

REMOVAL & INSTALLATION > REAR BRAKE PAD REMOVAL AND INSTALLATION > INSTALLATION

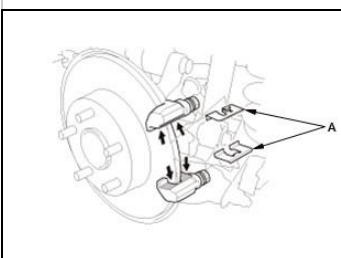


Courtesy of HONDA, U.S.A., INC.

Frequent inhalation of brake pad dust, regardless of material composition, could be hazardous to your health.

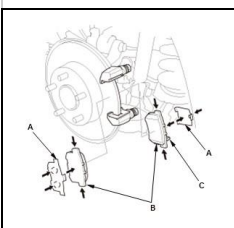
- Avoid breathing dust particles.
- Never use an air hose or brush to clean brake assemblies. Use an OSHA-approved vacuum cleaner.

1. Brake Pad - Install



Courtesy of HONDA, U.S.A., INC.

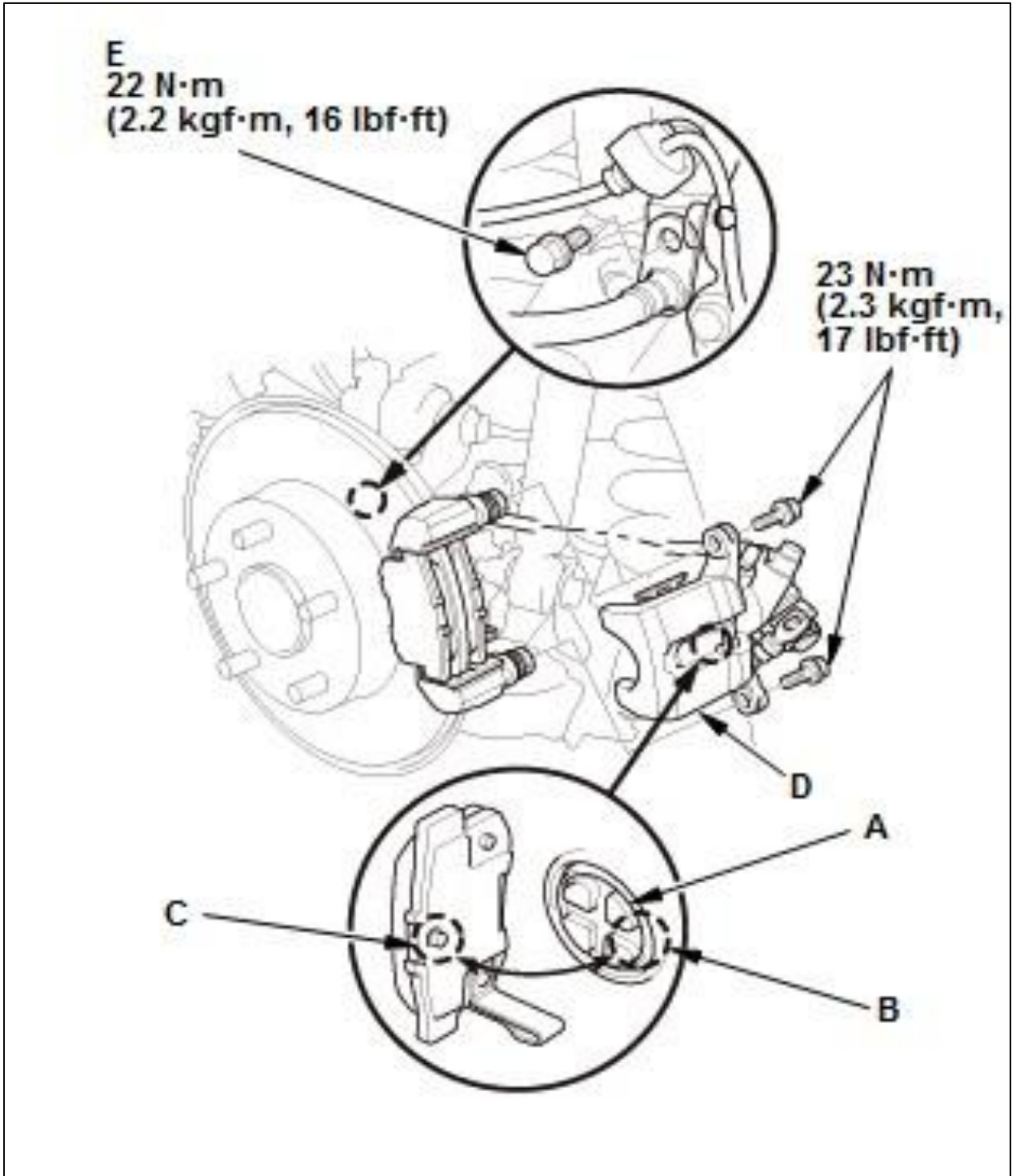
1. Apply a thin coat of M-77 assembly paste (P/N 08798-9010) to the retainer mating surface of the caliper bracket (indicated by the arrows).
2. Install the pad retainers (A)
3. Wipe off the excess assembly paste from the retainers. Keep the assembly paste away from the brake disc and the brake pads.



Courtesy of HONDA,
U.S.A., INC.

4. Apply a thin coat of M-77 assembly paste (P/N 08798-9010) to the pad side of the shims (A), the back of the brake pads (B), and the other areas indicated by the arrows.
 5. Wipe off the excess assembly paste from the pad shims and brake pads friction material. Keep grease and assembly paste away from the brake disc and brake pads. Contaminated brake disc or brake pads reduce stopping ability.
 6. Install the brake pads and pad shims correctly. Install the brake pad with the wear indicator (C) on the bottom inside position.
- NOTE:** If you are reusing the brake pads, always reinstall the brake pads in their original positions to prevent a temporary loss of braking efficiency.

Fig 1: Disk Brake Caliper Mounting Bolts With Torque Specifications



Courtesy of HONDA, U.S.A., INC.

7. Rotate the caliper piston (A) clockwise into the cylinder.
8. Align the cutout (B) in the piston with the tab (C) on the inner pad by turning the piston back.
NOTE: Be careful when moving the piston back in the caliper; brake fluid might overflow from the master cylinder's reservoir. If brake fluid gets on any painted surface, wash it off immediately with water.
9. Install the caliper body (D)
10. Install the brake hose mounting bolt (E).

2. Rear Wheels - Install

- | |
|-------------------------------|
| 1. Install both rear wheels . |
|-------------------------------|

3. Brake Fluid - Refill

- | |
|--|
| <p>1. Press the brake pedal several times to make sure the brakes work.</p> <p>NOTE: Engagement may require a greater pedal stroke immediately after the brake pads have been replaced as a set. Several applications of the brake pedal will restore the normal pedal stroke.</p> <p>2. Add brake fluid as needed.</p> |
|--|

4. Parking Brake - Adjust

- | |
|-------------------------------|
| 1. Adjust the parking brake . |
|-------------------------------|