



# INSTALLATION INSTRUCTIONS

Accessory <b>SIRI EYES FREE MODE HFL SOFTWARE</b>	Application <b>See APPLICATION CHART</b>	Publications No. <b>All 50044</b>
		Issue Date <b>NOV 2013</b>

**NOTE: Before installing this accessory software, make sure the customer has reviewed the system limitations on the Siri Eyes Free Mode customer information sheet on the last page of these instructions.**

American Honda has provided a Siri Eyes Free software update. This update allows users with a Siri-equipped iPhone to use Siri through the HandsFreeLink system.

### Application Chart

**2013 Accord** – ALL  
**2014 Accord 2-Door** EX, EX-L with Touch Screen Audio/Navigation – ALL  
**2014 Accord 4-Door** EX-L with Touch Screen Audio/Navigation – ALL

### SOFTWARE INFORMATION

HDS Software (PC)

HDS Software Version: 3.011.008

HFL Application Version 2.1.0.0

NOTE: To avoid an incorrect repair that would not be covered under warranty, use the software version listed above or a later version.

### REQUIRED TOOLS AND EQUIPMENT

- A laptop PC, loaded with the newest version of the HDS software, and equipped with the minimum requirements:
  - Any version of Windows listed below:
    - Windows XP (32-bit), at least 512 MB RAM, and Service Pack 2
    - Windows Vista/7 (32-bit), at least 1 GB RAM
    - Windows 7, (64-bit), at least 2 GB RAM
  - 1 gigahertz (GHz) or faster 32-bit (x86) or 64-bit (x64) processor
  - At least 16 GB of available hard disk space (32-bit) or at least 20 GB hard disk space (64-bit; Windows 7 only)
  - *Windows Vista Only:* Support for DirectX 9 graphics with WDDM and at least 128 MB of graphics memory (32 MB for Home Basic)
  - *Windows 7 Only:* DirectX 9 Graphics device with WDDM 1.0 or higher driver
  - The Microsoft.NET Framework software application: Version 2.0 or later

NOTE: This is available to download for free; go to [microsoft.com](http://microsoft.com) or ask your system administrator for assistance.

- The latest version of the HDS software installed on this computer. See the specific service bulletin you're applying for additional information.
- A recognized Bluetooth radio device installed on this computer. If one is required, order P/N: CDWF8T016 from the Tool and Equipment Program (on iN, click on: **Service > Quick Links > Tool and Equipment Program**), or choose a commercially available device from the list below.

Brand	Model#	OS*	32-bit	64-bit
Targus <sup>1</sup>	ACB10US1	ALL	X	X
Cirago <sup>2</sup>	BTA-3210	ALL	X	X
IO Gear <sup>1</sup>	GBU421	ALL	X	X
Rocketfish <sup>1</sup>	RF-MRBTAD	ALL	X	X

\* Windows XP, Windows Vista, or Windows 7 Operating System

<sup>1</sup> Use Widcomm (Broadcom) Bluetooth drivers.

<sup>2</sup> Use Toshiba Bluetooth drivers.

### SOFTWARE UPDATE PROCEDURE

#### 2013 Vehicles with Audio Hard Key System

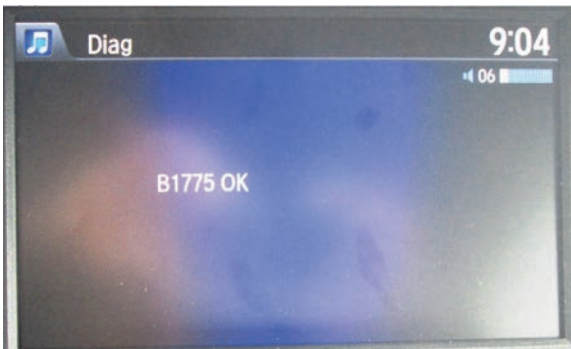
NOTE: Failure to follow the procedures and precautions may damage the HFL control unit.

1. Connect a battery charger to the vehicle and leave it connected during the entire procedure to maintain a steady voltage.
2. Turn the ignition switch to ON (II).

- Press and hold the audio preset No. 1 button, then press and hold the audio preset No. 6 button. Finally, press and hold the audio power button. Release the buttons once the audio unit enters the “Diag DIAG” screen.



- Press and hold the PHONE button for at least 5 seconds to enter the HFL diagnostic mode. The following screen “Diag B1775 OK” appears.



- Press the audio preset No. 2 button, the current software version screen will appear.

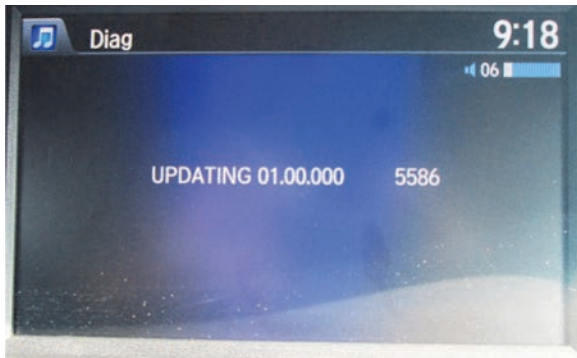


- On the HDS laptop, double-click the HFL Control Unit Update icon to launch the Honda HFL (HFT) Control Unit Update Tool (HFL update tool).

NOTE: The HDS laptop must be connected to an AC outlet during the reflash process and must be within a distance of 21 feet to the vehicle. Do not allow the HDS laptop to go into sleep or hibernate mode during the reflash process. If this occurs, the bluetooth connectivity between the HDS laptop and the vehicle's HFL system will be dropped, and the reflash process will be interrupted. It will then be necessary to restart the reflash procedure. See your laptop manufacturer's instructions or your system administrator for assistance to change these settings.

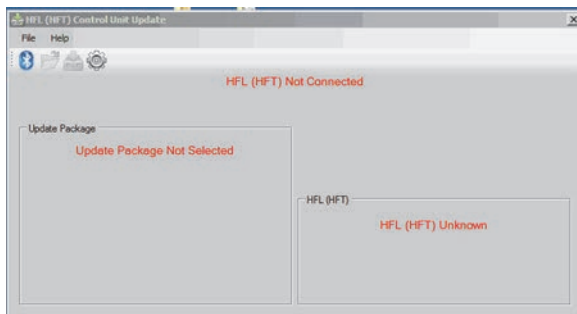


- Press the selector knob on the audio unit to change to the Diag UPDATING screen. The current software version a four digit PIN code will flash. Write it down on a piece of paper and leave it in the vehicle.

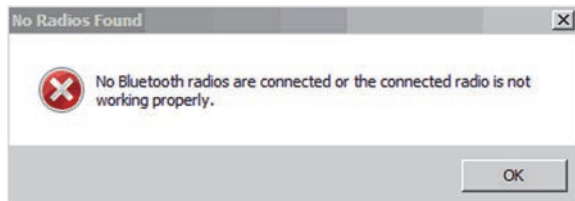


NOTE: This PIN code is required to complete the HFL update. Write this PIN down.

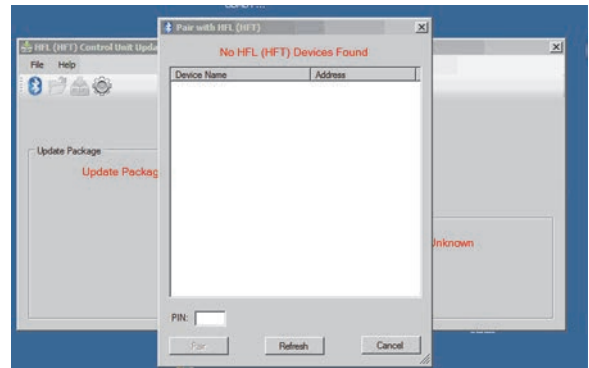
- In the HFL update tool, click on the Bluetooth icon in the upper left corner of the screen to pair with the vehicle's HFL.



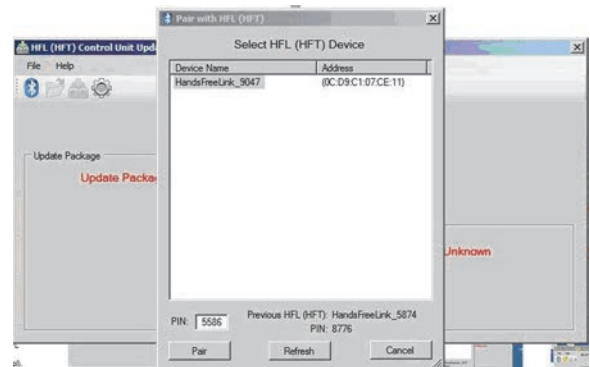
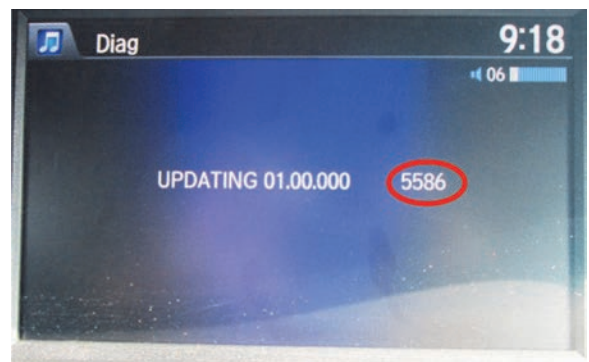
NOTE: If an active Bluetooth adapter is not found on the HDS laptop, this error message will appear. Please review the REQUIRED TOOLS and EQUIPMENT section of this publication for a recognized Bluetooth device. Contact your IT support for additional help.



- In the HFL update tool, the "Pair with HFL" window pops up. Wait a few seconds for the display to show "All Detected Bluetooth Devices." If no devices are found after about 30 seconds, click Refresh.

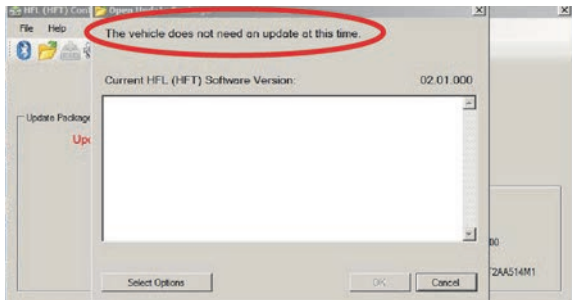


- In the HFL update tool, once the Bluetooth device has been detected, enter the four digit PIN code from the vehicle's display screen into the lower left hand corner of the pop-up window. Click Pair to begin the pairing process.

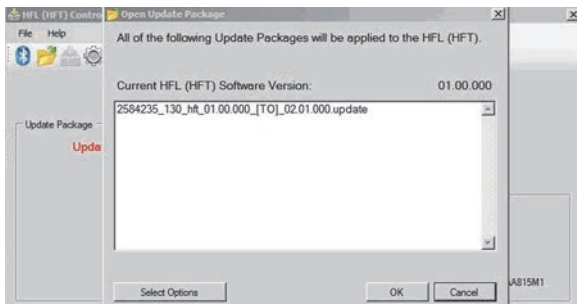


- Wait for the HFL update tool to complete the Bluetooth pairing process.
- In the HFL update tool, the: "Open Update Package" window pops up when the Bluetooth pairing process is complete. The HFL update tool automatically determines which version of the HFL software is present. The complete updates will be displayed on the HFL update tool.

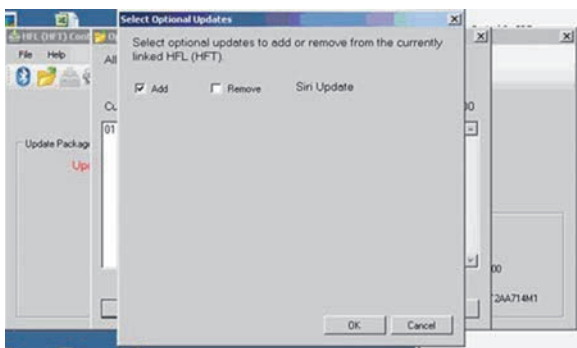
NOTE: If the vehicle software is up to date and no update is required, the following notification appears on the HFL update tool. Click the Select Options to continue.



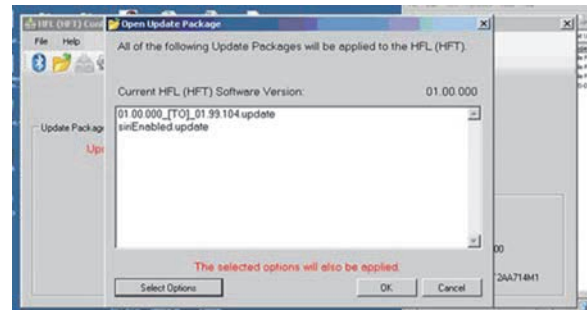
- Click Select Options to begin Siri HFL control unit reflash process.



- On the Select Optional Updates screen, check Add, then click OK.

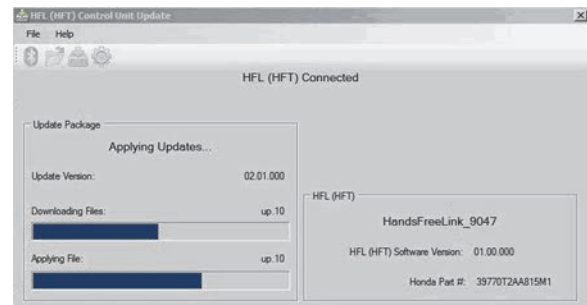


- The "Open Update Package" screen reappears with the update number and Siri Enabled update displayed. Click OK to begin the HFL reflash process.

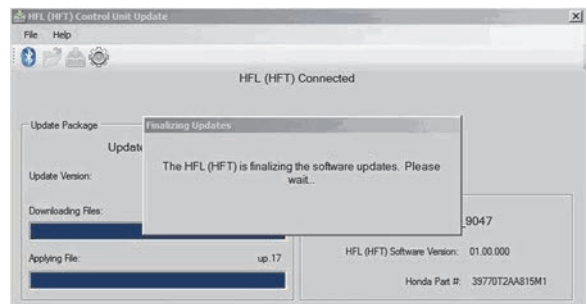


- The HFL reflash process begins. Allow several minutes for the programming to complete. The blue bars indicate the programming status and progression.

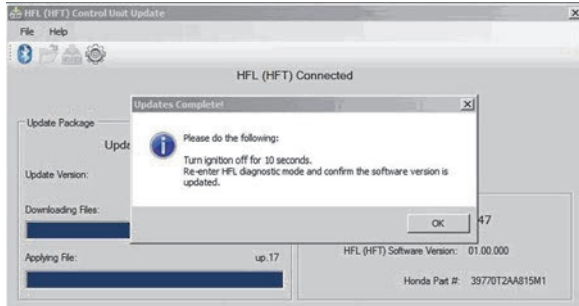
NOTE: The HFL reflash process begins. Allow several minutes for the programming to complete. The blue bars indicate the programming status and progression.



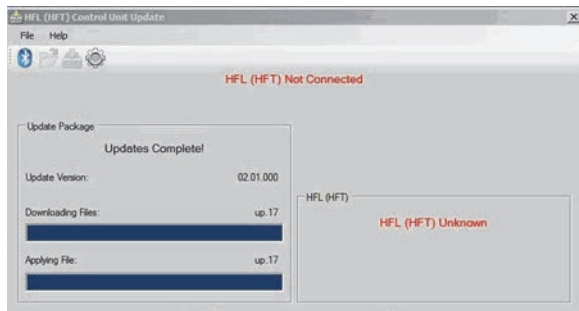
- In the HDS laptop, a pop-up window alerts you when the reflash process is finalizing, and then another pop-up informs you that the reflash process has completed.



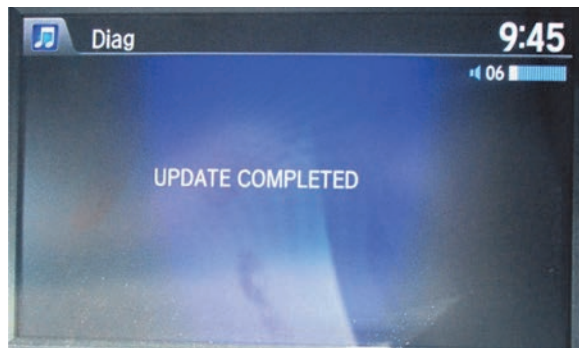
18. In the HFLupdate tool, click OK when the pop-up window indicates the reflash process is completed.
- NOTE: Failure to wait for the HDS laptop message “Update Complete” to display prior to turning the ignition OFF will interrupt the HFL programming and will damage the HFL control unit.



19. The HDS laptop will indicate the update is complete, and automatically disconnects the Bluetooth connection from the HFL control unit. Close the HFL update tool by clicking on the “X” in the upper right-hand corner.



20. The vehicle’s audio screen will indicate the HFL tool update has been completed.



21. Do the following to confirm that the software in the HFL control unit has been updated.
- Turn the ignition OFF.
  - Wait 10 seconds, then repeat steps 2 through 5 to place the audio system in self-diag mode.

22. Print out a copy of the Siri Eyes Free Mode customer information page included at the end of these instructions and place it in the vehicle.

23. Using a Siri-equipped iPhone, pair the iPhone, then check the Siri commands to make sure the update is complete by pressing and holding the Talk button until you hear the Siri tone. Say “What time is it.” You should hear Siri state the time.

- If the Siri commands work, the update is complete.
- If the Siri commands do not work, repeat steps 2 through 23 to try the update again.

NOTE:

- A Siri-equipped iPhone must be paired to the vehicle.
- If you do not **press and hold** the talk button, you will hear the normal vehicle voice recognition system.

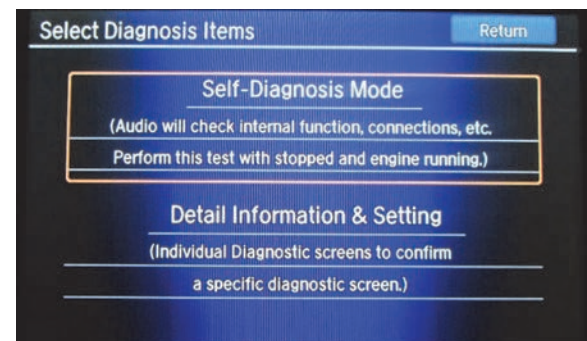
### SOFTWARE UPDATE PROCEDURE Vehicles with Touch Screen Audio

NOTE: Failure to follow the procedures and precautions in this bulletin may damage the HFL control unit.

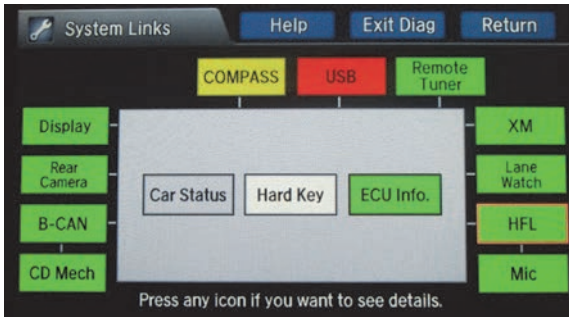
1. Connect a jumper battery to the vehicle and leave it connected during the entire procedure to maintain a steady voltage.
2. Turn the ignition switch to ON) (II).
3. Wait for the audio to boot up. When the disclaimer screen appears, press and hold the VOL, the DISP, and the BACK buttons for at least 5 seconds until the Select Diagnosis items screen appears.



4. Select Self Diagnosis Mode.



- The System Links screen appears and does an automatic diagnostic check. Wait a few moments while the process completes. Once completed, select HFL.



- On the HDS laptop, double-click the HFL Control Unit Update icon to launch the Honda HFL (HFT) Control Unit Update Tool (HFL update tool).

NOTE: The HDS laptop must be connected to an AC outlet during the reflash process and must be within a distance of 21 feet to the vehicle. Do not allow the HDS laptop to go into sleep or hibernate mode during the reflash process. If this occurs, the bluetooth connectivity between the HDS laptop and the vehicle's HFL system will be dropped, and the reflash process will be interrupted. It will then be necessary to restart the reflash procedure. See your laptop manufacturer's instructions or your system administrator for assistance to change these settings.



- On the HFL screen, select Reflash. The HFL system enters its reflash readiness mode.

NOTE: If the HFL is "NG," the Reflash button will be grayed out, and you will not be able to complete the HFL Control Unit Update Procedure. Troubleshoot for and repair any audio DTCs before continuing.



- The HFL software update screen displays a 4-digit PIN code.

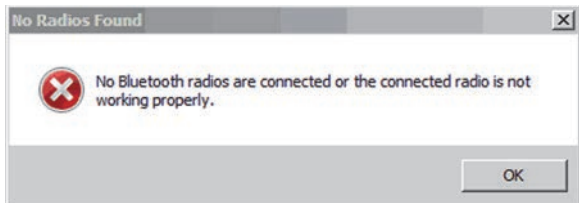
NOTE: This PIN code is required to complete the HFL update. Write this PIN down.



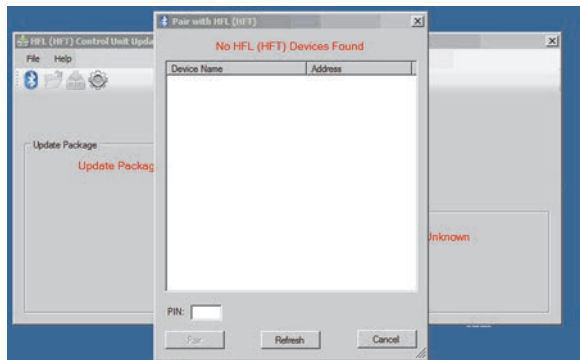
- In the HFL update tool, click on the Bluetooth icon in the upper left corner of the screen to pair with the vehicle's HFL.



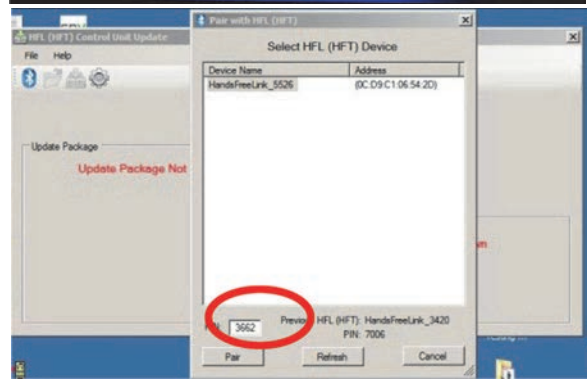
NOTE: If an active Bluetooth adapter is not found on the HDS laptop, this error message will appear. Please review the REQUIRED TOOLS and EQUIPMENT section of this service bulletin for a recognized Bluetooth device. Contact you IT support for additional help.



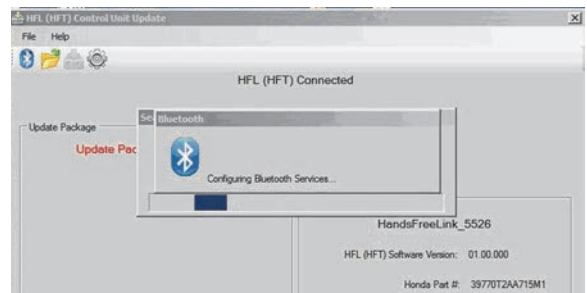
- In the HFL update tool, "Pair with HFL" window pops up. Wait a few seconds for the display to show "All Detected Bluetooth Devices." If no devices are found after about 30 seconds, click Refresh.



- In the HFL update tool, once the Bluetooth device has been detected, enter the four-digit PIN code from the vehicle's display screen into the lower left hand corner of the pop-up window. Click Pair to begin the pairing process.

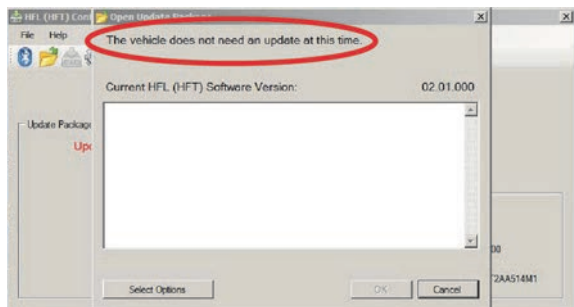


- Wait for the HFL update tool to complete the Bluetooth pairing process.

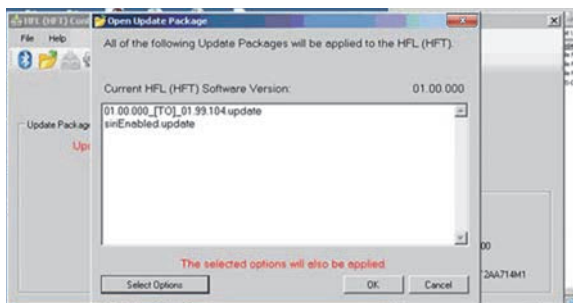


13. In the HFL update tool, “Open Update Package” window pops up when the Bluetooth pairing process is complete. The HFL update tool automatically determines which version of the HFL software is present. The compatible updates will be displayed on the HFL update tool.

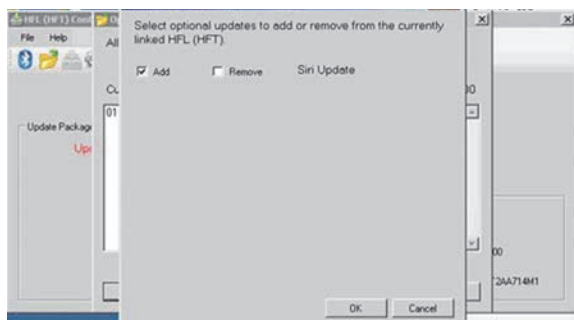
NOTE: If the vehicle software is up to date and no update is required, the following notification appears on the HFL update tool. Click the Select Options to continue.



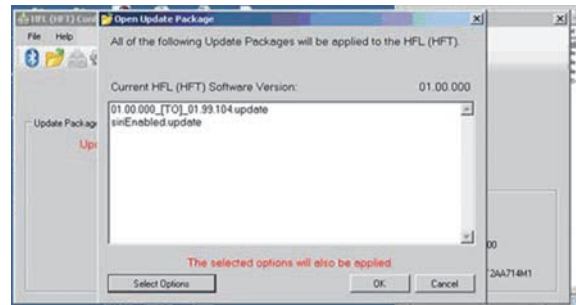
14. Click Select Options to begin Siri HFL control unit reflash process.



15. On the Select Optional Updates screen, check Add, then click OK.

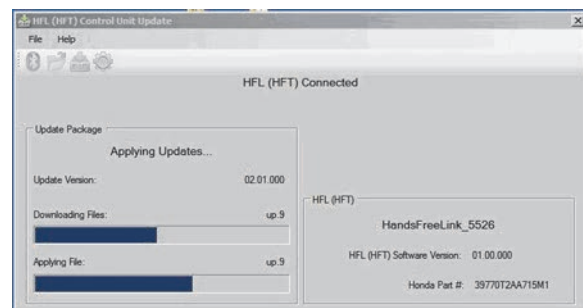


16. The Open Update Package screen reappears with the update number and siriEnabled.update displayed. Click OK to begin the HFL reflash process.

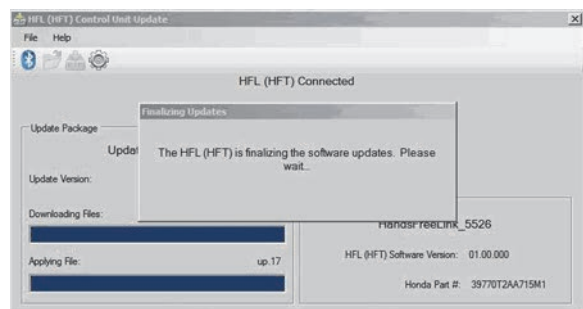


17. The HFL reflash process begins. Allow several minutes for the programming to complete. The blue bars indicate the programming status and progression.

NOTE: Do not turn the engine OFF while the HDS laptop is transferring files to the HFL control unit. Doing so will damage the HFL control unit. If the Bluetooth connectivity between the HDS laptop and the HFL control unit is lost, the ignition must remain ON. Reboot the HDS laptop and restart the HFL update tool. make sure you use the four-digit PIN you wrote down.

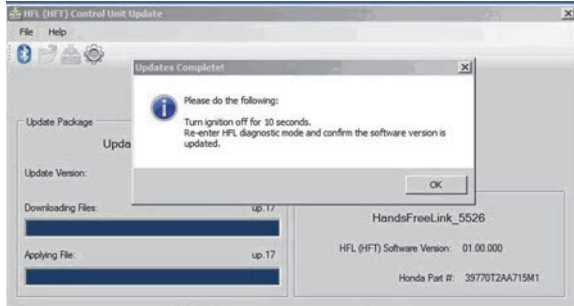


18. In the HDS laptop, a pop-up window alerts you when the reflash process is finalizing, and then another pop-up informs you that the reflash process has completed.

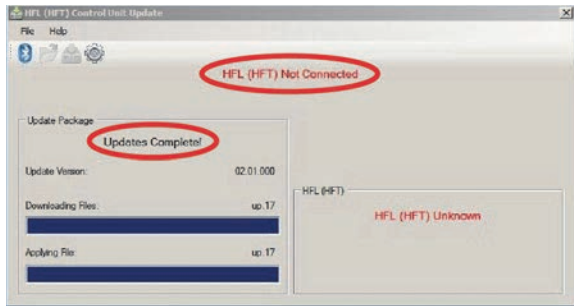




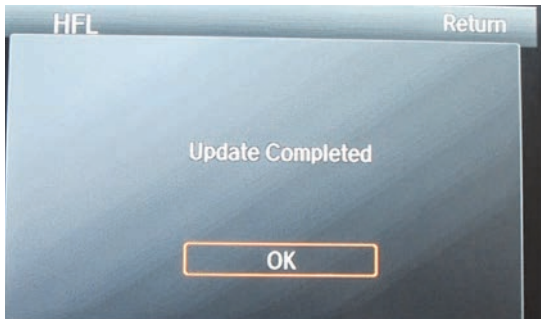
19. In the HFL update tool, click OK when the pop-up window indicates the reflash process is complete.
- NOTE: Failure to wait for the HDS laptop message “Updates Complete” to display prior to turning the ignition OFF will interrupt the HFL programming and will damage the HFL control unit.



20. The HDS laptop will indicate the update is complete, and automatically disconnects the Bluetooth connection from the HFL control unit. Close the HFL update tool by clicking on the “X” in the upper right hand corner.



21. The vehicle’s audio screen will indicate the HFL tool update has been completed.
- NOTE: Selecting OK will return to the HFL screen which will not show the newly updated software version.



22. Do the following to confirm that the software in the HFL control unit has been updated.
- Turn the ignition OFF.
  - Wait 10 seconds, then repeat steps 2 through 5 to place the audio system in self-diagnosis mode.
23. Print out a copy of the Siri Eyes Free Mode customer information page included at the end of these instructions and place it in the vehicle.
24. Using a Siri-equipped iPhone, pair the iPhone, then check the Siri commands to make sure the update is complete by pressing and holding the Talk button until you hear the Siri tone. Say “What time is it.” You should hear Siri state the time.
- If the Siri commands work, the update is complete.
  - If the Siri commands do not work, repeat steps 2 through 23 to try the update again.

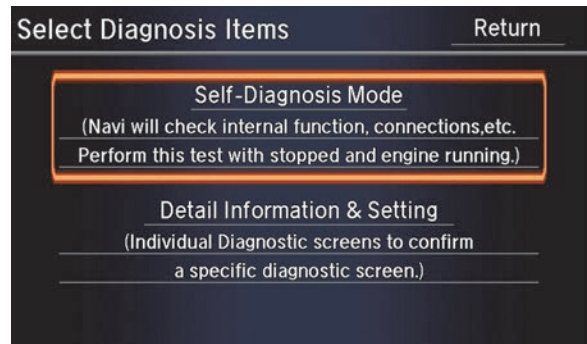
NOTE:

- A Siri-equipped iPhone must be paired to the vehicle.
- If you do not **press and hold** the talk button, you will hear the normal vehicle voice recognition system.

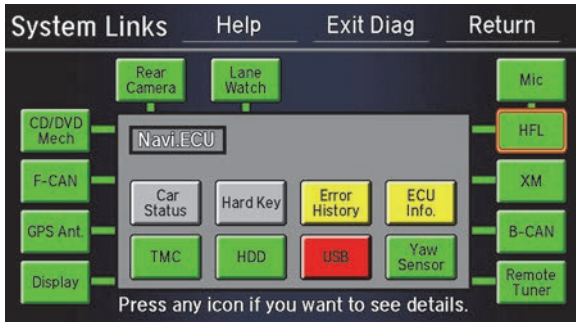
**Vehicles With Touch Screen Navigation**

NOTE: Failure to follow the procedures and precautions in this bulletin may damage the HFL control unit.

1. Connect a battery charger to the vehicle and leave it connected during the entire procedure to maintain a steady voltage.
2. Turn the ignition switch to ON (II).
3. Wait for the navigation system to boot up. When the disclaimer screen appears, press and hold the MENU the NAV, and the BACK buttons for at least 5 seconds until the Select Diagnosis items screen appears.
4. Select self Diagnosis Mode.

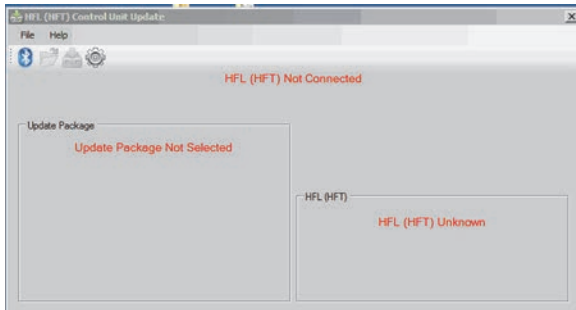


- The system Link screen appears and does an automatic diagnostic check. Wait a few moments while the process completes. Once completed and "Press any icon if you want to see details" appears, select HFL.



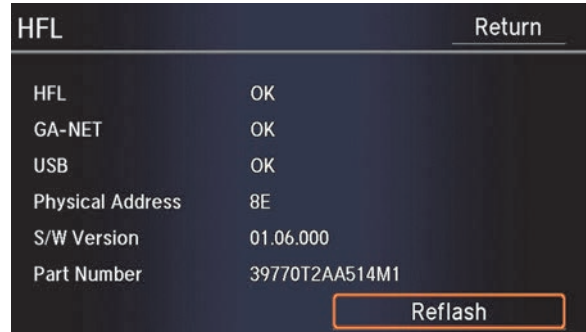
- On the HDS laptop, double-click the HFL control unit update icon to launch the Honda HFL (HFT) Control Unit Update Tool (HFL update tool).

NOTE: The HDS laptop must be connected to an AC outlet during the reflash process and must be within a distance of 21 feet to the vehicle. Do not allow the HDS laptop to go into sleep or hibernate mode during the reflash process. If this occurs, the Bluetooth connectivity between the HDS laptop and the vehicle's HFL system will be dropped, and the reflash process will be interrupted. It will then be necessary to restart the reflash procedure. See your laptop manufacturer's instructions or your system administrator for assistance to change these settings.

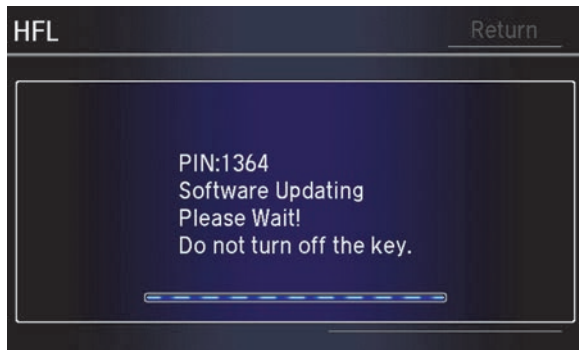


- On the HFL screen, select Reflash. The HFL system enters its reflash readiness mode.

NOTE: If the HFL is "NG" the Reflash button will be grayed out, and you will not be able to complete the HFL Control Unit Update Procedure. Troubleshoot for and repair any audio DTCs before continuing.



- The HFL software update screen displays a 4-digit PIN code. This PIN code is required to complete the HFL update. Write this PIN down.



**NOTE:**

- If the PIN is not displayed, refer to SB 13-001, *Audio Unit Navigation Update*. If the vehicle **is** listed in the VIN status inquiry, follow the procedures in the bulletin and use the warranty claim information below.

**WARRANTY CLAIM INFORMATION**

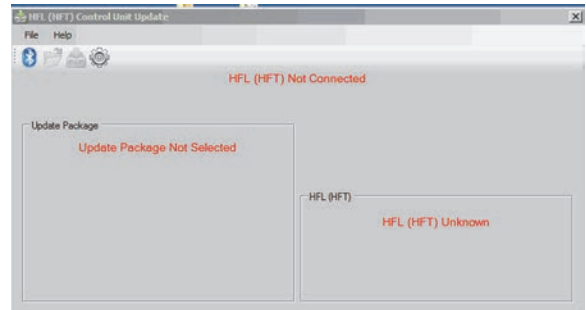
Operation Number: 0535A1  
 Flat Rate Time: 0.3 hour  
 Failed Part: P/N 39542-T2A-A91  
 Defect Code: 5HG00  
 Symptom Code: S8400  
 Skill Level: Repair Technician

- If the PIN is not displayed, refer to SB 13-001, *Audio Unit Navigation Update*. If the vehicle **is not** listed in the VIN status inquiry, follow the procedures in the bulletin and use the warranty claim information below.

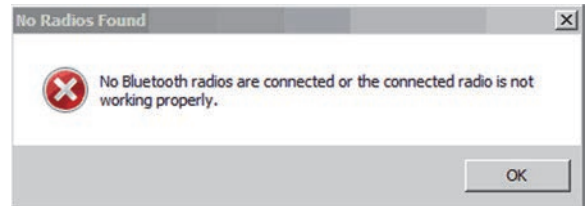
**WARRANTY CLAIM INFORMATION**

Operation Number: 0525A3 (for Siri customer-paid updates only)  
 Flat Rate Time: 0.3 hour  
 Failed Part: P/N 39542-T2A-A92  
 Defect Code: 09999  
 Symptom Code: 03214  
 Skill Level: Repair Technician

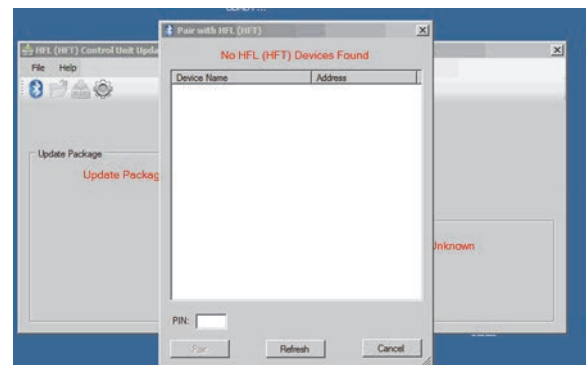
- In the HFL update tool, click on the Bluetooth icon in the upper left corner of the screen to pair with the vehicle's HFL.



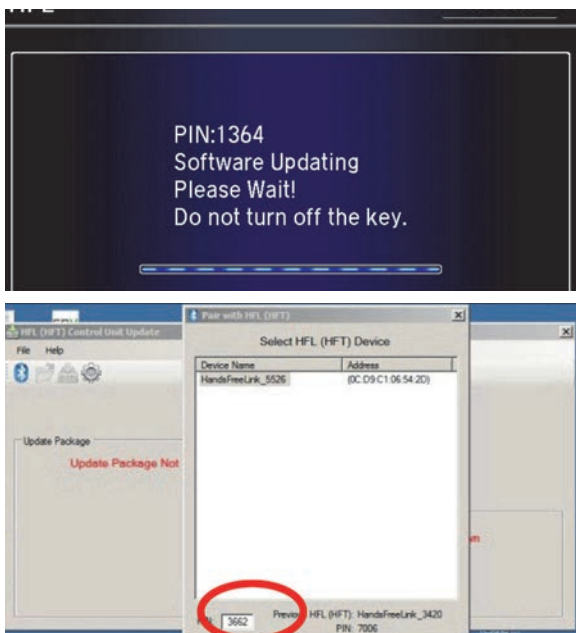
**NOTE:** If an active Bluetooth adapter is not found on the HDS laptop, this error message will appear. Please review the **REQUIRED TOOLS** and **EQUIPMENT** section of this service bulletin for a recognized Bluetooth device. Contact your IT support for additional help.



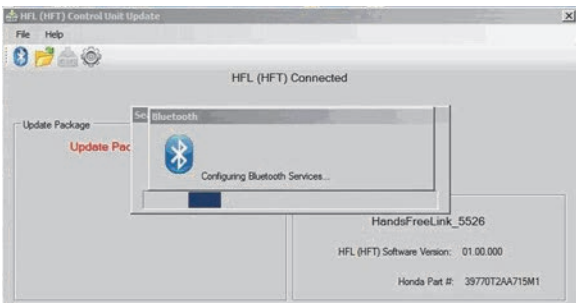
- In the HFL update tool, the "Pair with HFL" window pops up. Wait a few seconds for the display to show "All Detected Bluetooth Devices." If no devices are found after about 30 seconds, click Refresh.



- In the HFL update tool, once the Bluetooth device has been detected, enter the four-digit PIN code from the vehicle's display screen into the lower left hand corner of the pop-up window. Click Pair to begin the pairing process.

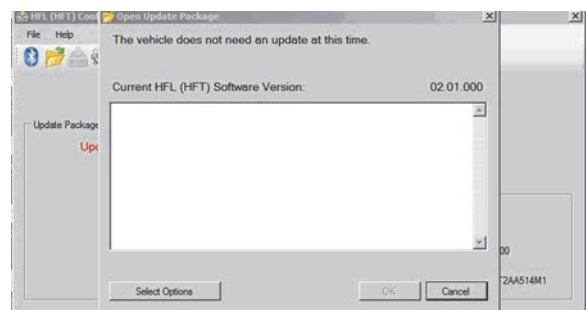


- Wait for the HFL update tool to complete the Bluetooth pairing process.

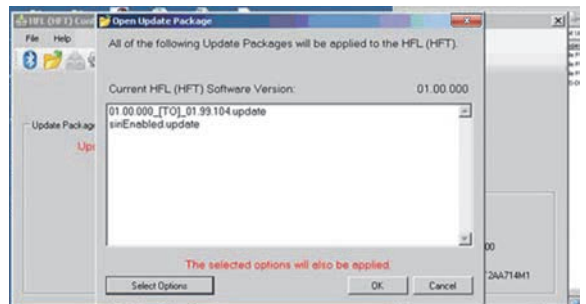


- In the HFL update tool, "Open Update Package" window pops up when the Bluetooth pairing process is complete. The HFL update tool automatically determines which version of the HFL software is present. The compatible updates will be displayed on the HFL update tool.

NOTE: If the vehicle software is up to date and no update is required, the following notification appears on the HFL update tool. Click the Select Options to continue.



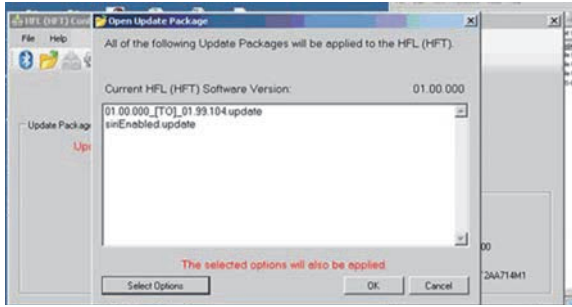
- Click Select Options to begin the Siri HFL control unit reflash process.



- On the Select Optional Updates screen, check Add, then click OK.

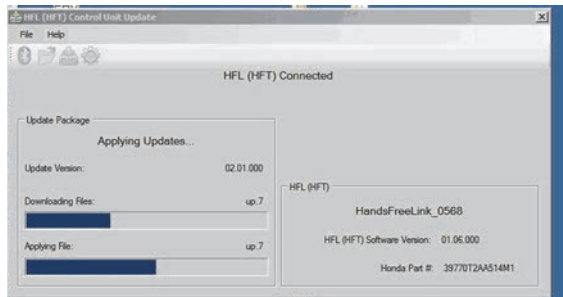


16. The Open Update package screen reappears with the update number and siriEnabled.update displayed. Click OK to begin the HFL control unit reflash process.

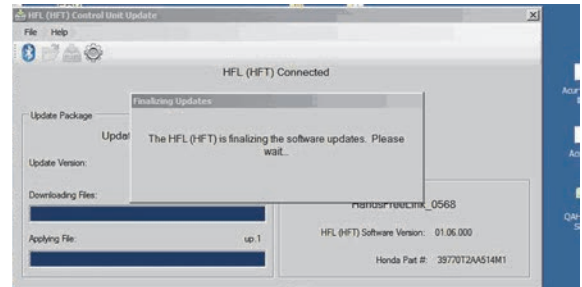


17. The HFL reflash process begins. Allow several minutes for the programming to complete. The blur bars indicate the programming status and progression.

NOTE: Do not turn the engine OFF while the HDS laptop is transferring files to the HFL control unit. Doing so will damage the HFL control unit. If the Bluetooth connectivity between the HDS laptop and the HFL control unit is lost, the ignition must remain ON. Reboot the HDS laptop and restart the HFL update tool. make sure you use the four-digit PIN you wrote down.

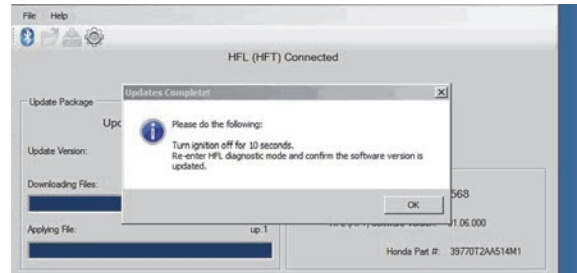


18. In the HDS laptop, a pop-up window alerts you when the reflash process is finalizing, and then another pop-up informs you that the reflash process has completed.



19. In the HFL update tool, click OK when the pop-up window indicates the reflash process is complete.

NOTE: Failure to wait for the HDS laptop message "Updates Complete" to display prior to turning the ignition OFF will interrupt the HFL programming and will damage the HFL control unit.

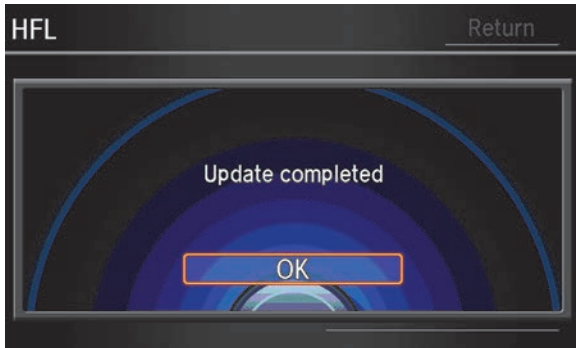


20. The HDS laptop will indicate the update is complete, and automatically disconnects the Bluetooth connection from the HFL control unit. Close the HFL update tool by clicking on the "X" in the upper right hand corner.



21. The vehicle's navigation screen will indicate the HFL tool update has been completed.

NOTE: Selecting OK will return to the HFL screen which will not show the newly update software version.



22. Do the following to confirm that the software in the HFL control unit has been updated.

- Turn the ignition OFF.
- Wait 10 seconds, then repeat steps 2 through 5 to place the audio system in self-diagnosis mode.

23. Print out a copy of the Siri Eyes Free Mode customer information page included at the end of these instructions and place it in the vehicle.

24. Using a Siri-equipped iPhone, pair the iPhone, then check the Siri commands to make sure the update is complete by pressing and holding the Talk button until you hear the Siri tone. Say "What time is it." You should hear Siri state the time.

- If the Siri commands work, the update is complete.
- If the Siri commands do not work, repeat steps 2 through 23 to try the update again.

NOTE:

- A Siri-equipped iPhone must be paired to the vehicle.
- If you do not **press and hold** the talk button, you will hear the normal vehicle voice recognition system.

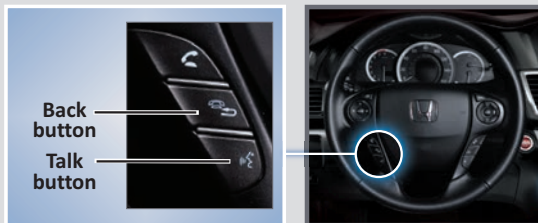
## Siri® Eyes Free Mode

In a continuing effort to bring you the latest and most innovative technology, Honda has integrated Siri Eyes Free Mode into your vehicle. This feature is available for installation at your Honda dealer. Applicable models include 2013 Accord (all), 2014 Accord Sedan EX-L and above, and 2014 Accord Coupe EX and above.

Siri Eyes Free Mode allows a more personalized integration experience between your Siri-equipped iPhone and your vehicle's *Bluetooth®* HandsFreeLink® system. In addition to using familiar in-vehicle voice commands, you can also say Siri-related commands. Use Siri as you normally would with your iPhone, for features such as:

- Sending and reading aloud text messages, and sending e-mails
- Setting up calendar entries, reminders, and alarms
- Checking the weather
- Posting to social media sites
- Finding nearby restaurants or points of interest (POIs)
- Turn-by-turn iPhone directions (when the audio system is set to *Bluetooth®* Audio or iPod mode)
- Receiving sports scores and stock quotes

Before you can use Siri in your vehicle, you must pair your Siri-equipped iPhone when the vehicle is stopped. See your vehicle's Owner's Manual for pairing instructions and tips on using voice recognition.



### To activate Siri

**Press and hold** the Talk button until you hear the Siri tone (after the initial tone). Say your Siri command. If you only press and release the Talk button, the vehicle voice recognition system is activated.

### To cancel a command

Press the Back button.

Here are some examples of Siri commands you can use.\*

Any requests that include visual feedback from Siri on your phone are not displayed on the vehicle screen.

To hear turn-by-turn directions or songs through your vehicle, your audio system must be set to *Bluetooth®* Audio or iPod mode.

“Call John Smith”

“Read my new text message”

“Send an e-mail to Mary”

“Find a nearby sushi restaurant”

“Get directions to John’s house”

“Remind me to pick up a birthday gift”

“Set up a meeting for today at 3 p.m.”

“What is the stock price for Honda?”

“What is the weather in Los Angeles?”

“Wake me up at 6 a.m. tomorrow”

“Post a status to Twitter (or Facebook)”

“Play song (song title)”

\*Certain commands rely on your phone's features and existing apps.

For more information or help, contact Honda Customer Service at (800) 999-1009, select option 3, and ask to be transferred to technical support.

Installation costs may vary. Check with your dealer for final pricing.

We recommend placing your phone in a safe location (e.g., center console storage) and only using Siri Eyes Free Mode and voice feedback to access the Siri features.

Always remain attentive when driving. Certain functions are disabled or inoperable while the vehicle is in motion. Only operate the system when conditions permit you to safely do so. Avoid focusing on the device display or manually operating the system controls while driving. State or local laws may prohibit the operation of handheld electronic devices while operating a vehicle.

iPhone and Siri are trademarks of Apple, Inc.

The *Bluetooth®* word mark and logos are registered trademarks owned by Bluetooth SIG, Inc., and any use of such marks by American Honda Motor Co., Inc., is under license. Other trademarks and trade names are those of their respective owners.

