



INSTALLATION INSTRUCTIONS

Accessory

SIRI EYES FREE MODE
HFL SOFTWARE

Application

See APPLICATION CHART

Publications No.

BII 50045

Issue Date

NOV 2013

NOTE: Before installing this accessory software, make sure the client has reviewed the system limitations on the Siri Eyes Free Mode client information sheet on the last page of these instructions.

American Honda has provided a Siri Eyes Free software update. This update allows users with a Siri-equipped iPhone to use Siri through the HandsFreeLink system.

Application Chart

2013–14 ILX Premium and Tech – ALL
2013–14 ILX Hybrid Tech – ALL
2013–14 RDX – ALL

SOFTWARE INFORMATION

HDS Software (PC)

HDS Software Version: 3.011.008

HFL Application Version 2.1.0.0

NOTE: To avoid an incorrect repair that would not be covered under warranty, use the software version listed above or a later version.

REQUIRED TOOLS AND EQUIPMENT

- A laptop PC, loaded with the newest version of the HDS software, and equipped with the minimum requirements:
 - Any version of Windows listed below:
 - Windows XP (32-bit), at least 512 MB RAM, and Service Pack 2
 - Windows Vista/7 (32-bit), at least 1 GB RAM
 - Windows 7, (64-bit), at least 2 GB RAM
 - 1 gigahertz (GHz) or faster 32-bit (x86) or 64-bit (x64) processor
 - At least 16 GB of available hard disk space (32-bit) or at least 20 GB hard disk space (64-bit; Windows 7 only)
 - *Windows Vista Only:* Support for DirectX 9 graphics with WDDM and at least 128 MB of graphics memory (32 MB for Home Basic)
 - *Windows 7 Only:* DirectX 9 Graphics device with WDDM 1.0 or higher driver
 - The Microsoft.NET Framework software application: Version 2.0 or later

NOTE: This is available to download for free; go to microsoft.com or ask your system administrator for assistance.

- The latest version of the HDS software installed on this computer. See the specific service bulletin you're applying for additional information.
- A recognized Bluetooth radio device installed on this computer. If one is required, order P/N: CDWF8T016 from the Tool and Equipment Program (on iN, click on: **Service > Quick Links > Tool and Equipment Program**), or choose a commercially available device from the list below.

Brand	Model#	OS*	32-bit	64-bit
Targus ¹	ACB10US1	ALL	X	X
Cirago ²	BTA-3210	ALL	X	X
IO Gear ¹	GBU421	ALL	X	X
Rocketfish ¹	RF-MRBTAD	ALL	X	X

* Windows XP, Windows Vista, or Windows 7 Operating System

¹ Use Widcomm (Broadcom) Bluetooth drivers.

² Use Toshiba Bluetooth drivers.

SOFTWARE UPDATE PROCEDURE

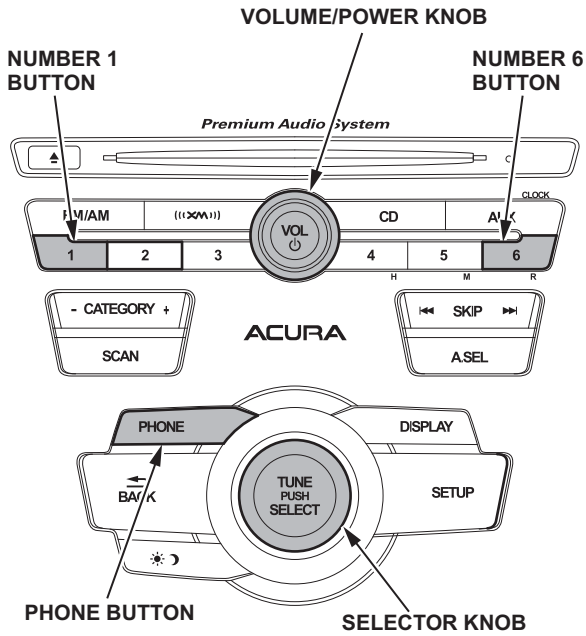
1. Do the HFL update process to pair the HDS to the vehicle.

Vehicles without Navigation

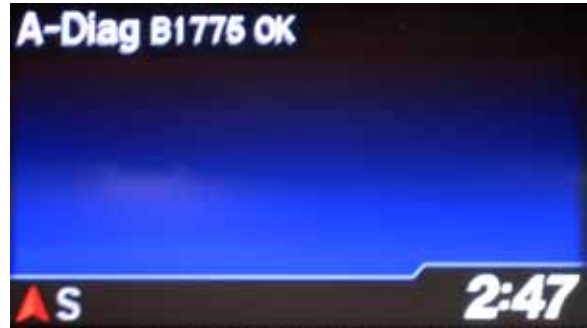
NOTE: Failure to follow the procedures and precautions may damage the HFL control unit.

1. Connect a jumper battery to the vehicle and leave it connected during this entire procedure to maintain a steady voltage.
2. Press the engine start/stop button to select the vehicle ON mode.

- Press and hold the audio preset No. 1 button, then press and hold the audio preset No. 6 button. Press and hold the Volume/Power knob. Release the buttons and the knob once the audio unit enters into the self-diagnosis mode and the “A-Diag DIAG” screen appears.



- Press and hold the PHONE button for at least 5 seconds to enter the HFL diagnostic mode. One of the following screens appears: “A-Diag XXXXX OK” or “A-Diag ---.”



- On the HDS laptop, double-click the HFL Control Unit Update icon to launch the Honda HFL (HFT) Control Unit Update Tool (HFL update tool).



NOTE: The HDS laptop must be connected to an AC outlet during the reflash process and must be within a distance of 21 feet to the vehicle. Do not allow the HDS laptop to go into sleep or hibernate mode during the reflash process. If this occurs, the Bluetooth connectivity between the HDS laptop and the vehicle's HFL system will be dropped, and the reflash process will be interrupted. It will then be necessary to restart the reflash procedure. See your laptop manufacturer's instructions or your system administrator for assistance to change these settings.

- Press the audio preset No. 2 button several times until the "A-diag UPDATE" screen appears on the i-MID.



- Press the selector knob on the audio unit to change the HFL update screen. A four-digit PIN code appears. Write it down on a piece of paper or on the RO, and leave it in the vehicle.



NOTE: This PIN is required to complete the HFL update and to re-establish communication if the update process is interrupted. If this PIN is lost, forgotten, or otherwise misplaced, and an interruption to the reflash process occurs, the HFL control unit will remain stuck in reflash mode, and you will be unable to complete the update. If this happens, you must replace the HFL control unit.

- In the HFL update tool, click on the Bluetooth icon in the upper left-hand corner of the HFL Control Unit Update screen to prepare the HDS laptop for the pairing process with the vehicle's HFL control unit.



NOTE: If an active Bluetooth adapter is not found on the HDS laptop, this error message will appear. Please review the REQUIRED TOOLS AND EQUIPMENT section of this publication for a recognized Bluetooth device. Contact your IT support for additional help.

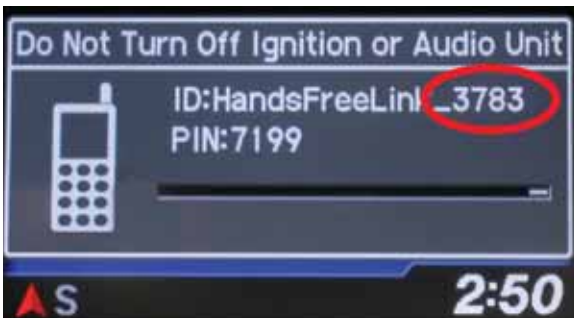


- In the HFL update tool, the “Pair with HFL” window pops up. Wait a few seconds for the display to show “All Detected Bluetooth Devices.” If no devices are found after 30 seconds, click on **Refresh**.

NOTE: If the HFL control unit is unable to establish a Bluetooth connection with the HFL update tool after 5 minutes, it times out. If this occurs, reboot the HDS laptop, press the engine start/stop button to select the OFF mode, and go back to step 2.

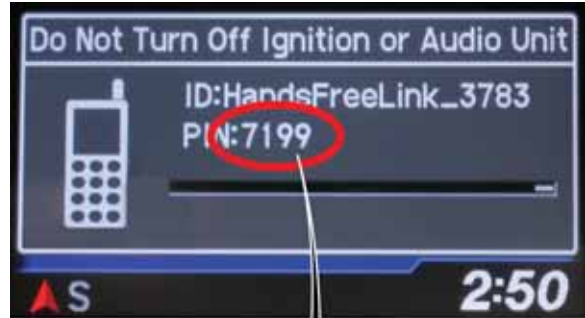


- In the HFL update tool, select the correct Bluetooth device (if more than one appears) that matches the HandsFreeLink ID code shown in the vehicle’s display screen.



NOTE: There may be more than one Bluetooth device listed on the HFL update tool “Pair With HFL (HFT)” screen. Select the correct HFL ID from the list.

- In the HFL update tool, enter the four-digit PIN from the vehicle’s display screen into the lower left-hand corner of the pop-up window. Click on **Pair** to begin the pairing process.



PAIR BUTTON

NOTE: Leave the PIN you wrote down in step 7 with the vehicle. The PIN is required to complete the HFL update and to re-establish communication if the update process is interrupted. If this PIN is lost, forgotten, or otherwise misplaced, the HFL control unit will be stuck in reflash mode, and you will be unable to complete the update. If this happens, you must replace the HFL control unit.

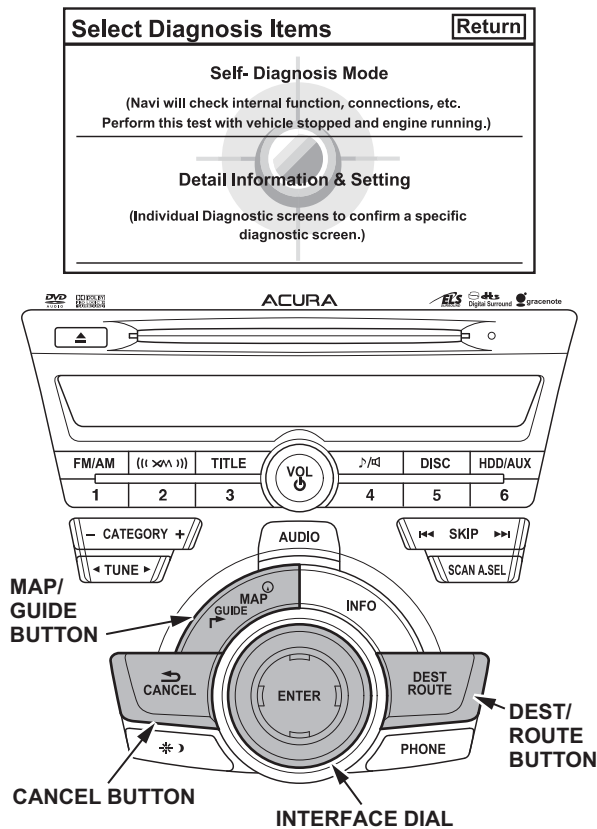
- Wait for the HFL update tool to complete the Bluetooth pairing process, then continue with the Software Update Procedure on page 8, step 2.



Vehicles with Navigation

NOTE: Failure to follow the procedures and precautions may damage the HFL control unit.

1. Connect a jumper battery to the vehicle and leave it connected during this entire procedure to maintain a steady voltage.
2. Press the engine start/stop button to select the vehicle ON mode.
3. Wait for the navigation system to boot up. When the "OK" screen appears, press and hold the MAP/GUIDE, the DEST/ROUTE, and the CANCEL buttons for at least 3 seconds to access "Select Diagnosis Items."



4. Rotate the interface dial to select "Self Diagnosis Mode," then press ENTER on the interface dial.



5. The "System Link" screen appears and does an automatic diagnostic check. Wait a few moments while the process completes. Once completed, rotate the interface dial to select HFL and press ENTER using the interface dial.



Wait until diagnostic check is complete.



Select HFL button.

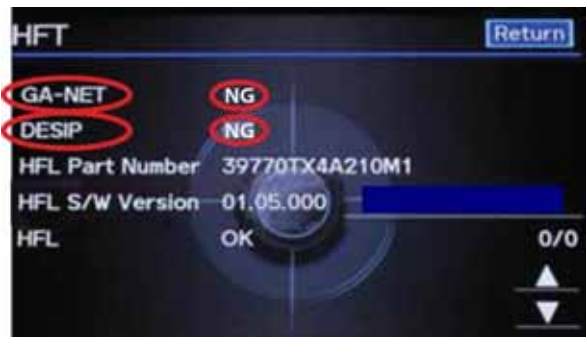
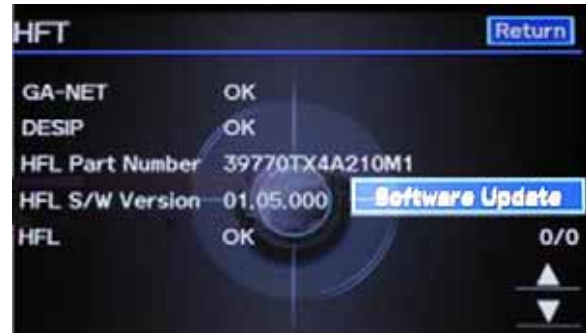
- In the HFL update tool, double-click the HFL Control Unit Update icon to launch the Honda HFL (HFT) Control Unit Update Tool (HFL update tool).



NOTE: The HDS laptop must be connected to an AC outlet during the reflash process and must be within a distance of 21 feet to the vehicle. Do not allow the HDS laptop to go into sleep or hibernate mode during the reflash process. If this occurs, the Bluetooth connectivity between the HDS laptop and the vehicle's HFL system is dropped, and the reflash process is interrupted. It will then be necessary to restart the reflash procedure. See your laptop manufacturer's instructions or your system administrator for assistance to change these settings.

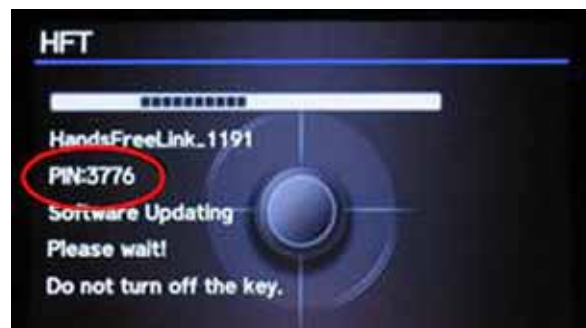
- Rotate the interface dial to select "Software Update" in the HFL menu. Press ENTER on the interface dial to set the HFL system into reflash readiness mode.

NOTE: If either GA-NET or DESIP is NG, the Software Update button will be grayed out, and you won't be able to proceed with this procedure. You must troubleshoot for and repair any NG conditions before continuing.



- The HFL software update screen will display a 4-digit PIN code. Write it down on a piece of paper or on the RO and leave it in the vehicle.

NOTE: This PIN is required to complete the HFL update and to re-establish communication if the update process is interrupted. If this PIN is lost, forgotten, or otherwise misplaced, the HFL control unit will be stuck in reflash mode, and you will be unable to complete the update. If this happens, you must replace the HFL control unit.



- In the HFL update tool, click on the Bluetooth icon in the upper left corner of the “HFL Control Unit Update” screen in the HDS laptop to allow pairing with the vehicle’s HFL.



NOTE: If an active Bluetooth adapter is not found on the HDS laptop, this error message will appear. Review the REQUIRED TOOLS AND EQUIPMENT section of this publication for a recognized Bluetooth device. Contact your IT support for additional help.

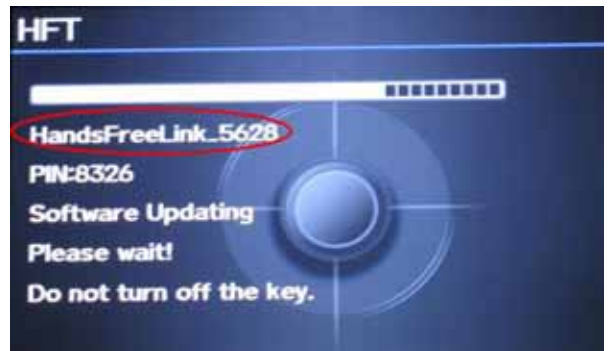
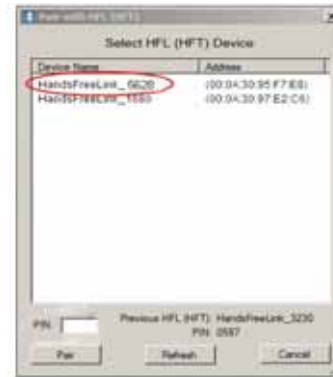


- In the HDS laptop, the “Pair with HFL” window pops up. Wait a few seconds for the display to show “All Detected Bluetooth Devices.” If no devices are found after about 30 seconds, click **Refresh**.



NOTE: Leave the PIN you wrote down in step 7 with the vehicle. The PIN is required to complete the HFL update and to re-establish communication if the update process is interrupted. If this PIN is lost, forgotten, or otherwise misplaced, the HFL control unit will be stuck in reflash mode, and you will be unable to complete the update. If this happens, you must replace the HFL control unit.

- In the HFL update tool, select the Bluetooth device from the list that matches the HandsFreeLink ID code shown in the navigation display.



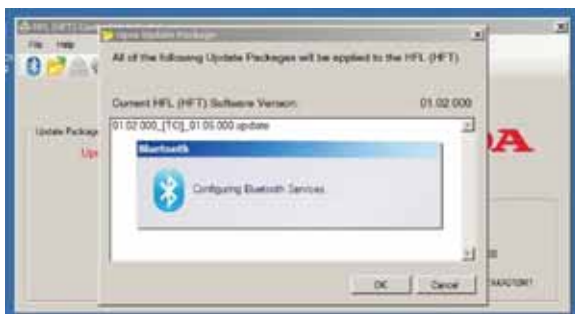
NOTE: There may be more than one Bluetooth device listed in the HFL update tool “Pair With HFL (HFT)” screen. Select the correct HFL ID from the list.

- In the HFL update tool, once the Bluetooth device has been detected, enter the four-digit PIN from the vehicle's display screen into the lower left-hand corner of the pop-up window. Click **Pair** to begin the pairing process.



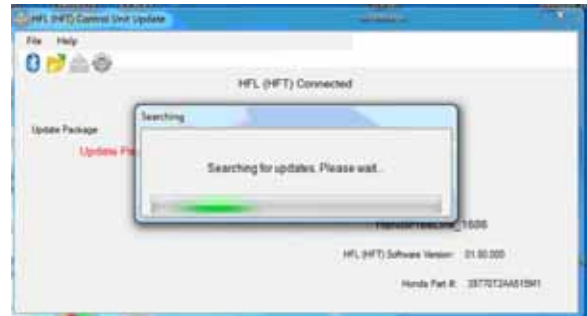
NOTE: Leave the PIN you wrote down in step 8 with the vehicle. This PIN is required to complete the HFL update and to re-establish communication if the update process is interrupted. If this PIN is lost, forgotten, or otherwise misplaced, the HFL control unit will be stuck in reflash mode, and you will be unable to complete the update. If this happens, you must replace the HFL control unit.

- Wait for the HFL update tool to complete the Bluetooth pairing process, and continue with the Software Update Procedure.



SOFTWARE UPDATE PROCEDURE (CONT'D)

- Once the HDS is paired to the vehicle, the HDS will search for updates.



- On the HDS, the "Open Update Package" window pops up when the Bluetooth pairing process is complete. The HFL Control Unit Update Tool automatically determines which version of the HFL software is present, and which updates are on the HDS. Click **Select Options** to begin the HFL control unit reflash process.

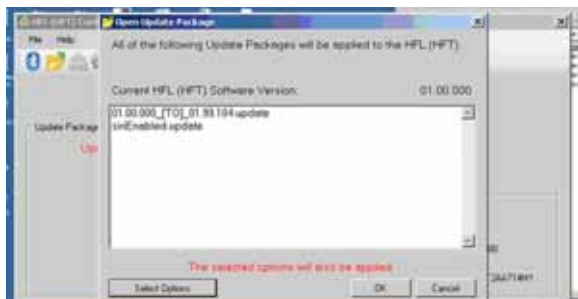
NOTE: If the vehicle software is up to date and no update is required, the following notification appears on the HFL update tool. Click the Select Options to continue.



- On the Select Optional Updates screen, check **Add**, then click **OK**.



- The Open Update Package screen reappears with the update number and siriEnabled.update displayed. Click **OK**.

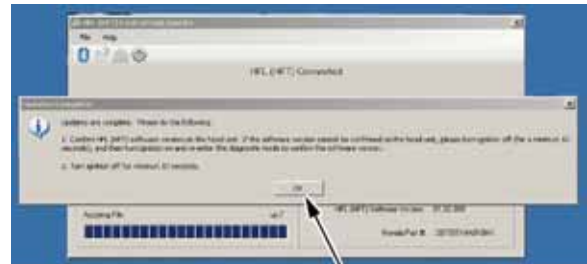
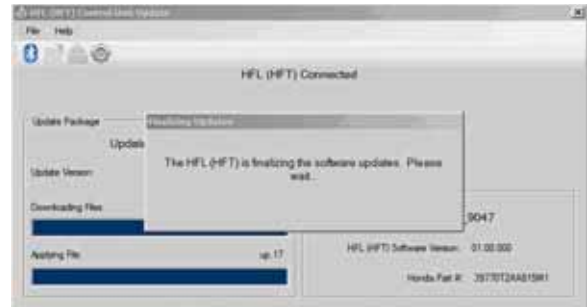


- The HFL update process begins. Allow several minutes for the programming to complete. The blue bars indicate the programming status and progression.



NOTE: Do not press the engine start/stop button to select the vehicle OFF mode while the HDS is transferring files to the HFL control unit. Doing so will damage the HFL control unit. If Bluetooth connectivity between the HDS and the HFL control unit is lost, the ignition must remain ON, but the HDS may be rebooted and the "Honda HFL (HFT) Control Unit Update Tool" application on the HDS may be restarted, using the four-digit PIN that you wrote down when you paired the HDS to the vehicle.

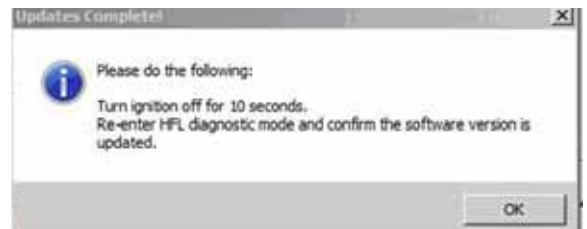
- On the HDS, a pop-up window alerts you when the update process is finalizing, and then another pop-up informs you that the reflash process is complete. Click **OK**.



Click "OK"

NOTE: Failure to wait for the HDS message "Updates Complete" to display prior to pressing the start/stop button to select the vehicle OFF mode will interrupt the HFL programming and will damage the HFL control unit.

- The HDS will indicate the update is complete, and will automatically disconnect the Bluetooth connection with the HFL control unit. Select **OK**, and follow the on screen instructions.



- Print out a copy of the Siri Eyes Free Mode client information page included at the end of this bulletin and place it in the vehicle.

10. Using a Siri-equipped iPhone, pair the iPhone, then check the Siri commands to make sure the update is complete by pressing and holding the Talk button until you hear the Siri tone. Say "What time is it." You should hear Siri state the time.

- If the Siri commands work, the update is complete.
- If the Siri commands do not work, repeat steps 2 through 23 to try the update again.

NOTE:

- A Siri-equipped iPhone must be paired to the vehicle.
- If you do not **press and hold** the talk button, you will hear the normal vehicle voice recognition system.

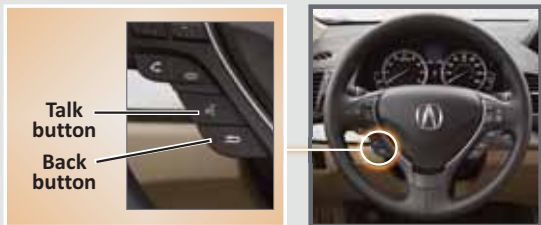
Siri® Eyes Free Mode

In a continuing effort to bring you the latest and most innovative technology, Acura integrated Siri Eyes Free Mode into your vehicle. This feature is available for installation at your Acura dealer. Applicable models include 2013–14 ILX Premium and Tech, 2013–14 ILX Hybrid (all), and 2013–14 RDX (all).

Siri Eyes Free Mode allows a more personalized integration experience between your Siri-equipped iPhone and your vehicle's *Bluetooth®* HandsFreeLink® system. In addition to using familiar in-vehicle voice commands, you can also say Siri-related commands. Use Siri as you normally would with your iPhone, for features such as:

- Sending and reading aloud text messages, and sending e-mails
- Setting up calendar entries, reminders, and alarms
- Checking the weather
- Posting to social media sites
- Finding nearby restaurants or points of interest (POIs)
- Turn-by-turn iPhone directions (when the audio system is set to *Bluetooth®* Audio or iPod mode)
- Receiving sports scores and stock quotes

Before you can use Siri in your vehicle, you must pair your Siri-equipped iPhone when the vehicle is stopped. See your vehicle's Owner's Manual for pairing instructions and tips on using voice recognition.



To activate Siri

Press and hold the Talk button until you hear the Siri tone (after the initial tone). Say your Siri command. If you only press and release the Talk button, the vehicle voice recognition system is activated.

To cancel a command

Press the Back button.

Here are some examples of Siri commands you can use.*

Any requests that include visual feedback from Siri on your phone are not displayed on the vehicle screen.

To hear turn-by-turn directions or songs through your vehicle, your audio system must be set to *Bluetooth®* Audio or iPod mode.

“Call John Smith”

“Read my new text message”

“Send an e-mail to Mary”

“Find a nearby sushi restaurant”

“Get directions to John’s house”

“Remind me to pick up a birthday gift”

“Set up a meeting for today at 3 p.m.”

“What is the stock price for Honda?”

“What is the weather in Los Angeles?”

“Wake me up at 6 a.m. tomorrow”

“Post a status to Twitter (or Facebook)”

“Play song (song title)”

*Certain commands rely on your phone's features and existing apps.

For more information or help, contact Acura Client Relations at (800) 382-2238 and select option 6.

Installation costs may vary. Check with your dealer for final pricing.

We recommend placing your phone in a safe location (e.g., center console storage) and only using Siri Eyes Free Mode and voice feedback to access the Siri features.

Always remain attentive when driving. Certain functions are disabled or inoperable while the vehicle is in motion. Only operate the system when conditions permit you to safely do so. Avoid focusing on the device display or manually operating the system controls while driving. State or local laws may prohibit the operation of handheld electronic devices while operating a vehicle.

iPhone and Siri are trademarks of Apple, Inc.

The *Bluetooth®* word mark and logos are registered trademarks owned by Bluetooth SIG, Inc., and any use of such marks by American Honda Motor Co., Inc., is under license. Other trademarks and trade names are those of their respective owners.

