

Electrical Troubleshooting

Troubleshooting Flowchart — Shift Solenoid Valve B

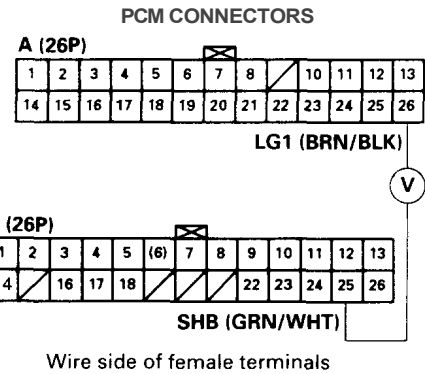
• OBD II Scan Tool indicates Code P0758.
 • Self-diagnosis **D4** indicator light blinks eight times.

Possible Cause

- Disconnected shift solenoid valve B connector
- Short or open in shift solenoid valve B wire
- Faulty shift solenoid valve B
- Open VB SOL line

Check for a Short to Power:

1. Turn the ignition switch OFF.
2. Disconnect the A (26P) and E (26P) connectors from the PCM.
3. Turn the ignition switch ON (II).
4. Measure the voltage between the E25 and A26 terminals.

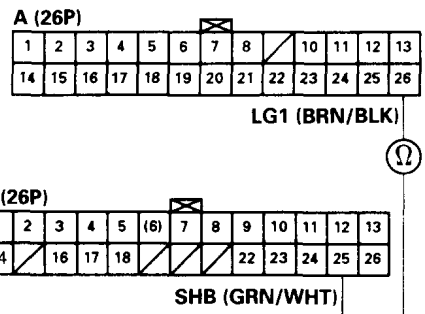


Is there voltage? **YES** → Repair short to power in the wire between the E25 terminal and the shift solenoid valve B.

NO

Measure Shift Solenoid Valve B Resistance:

1. Turn the ignition switch OFF.
2. Measure the resistance between the E25 and A26 terminals.



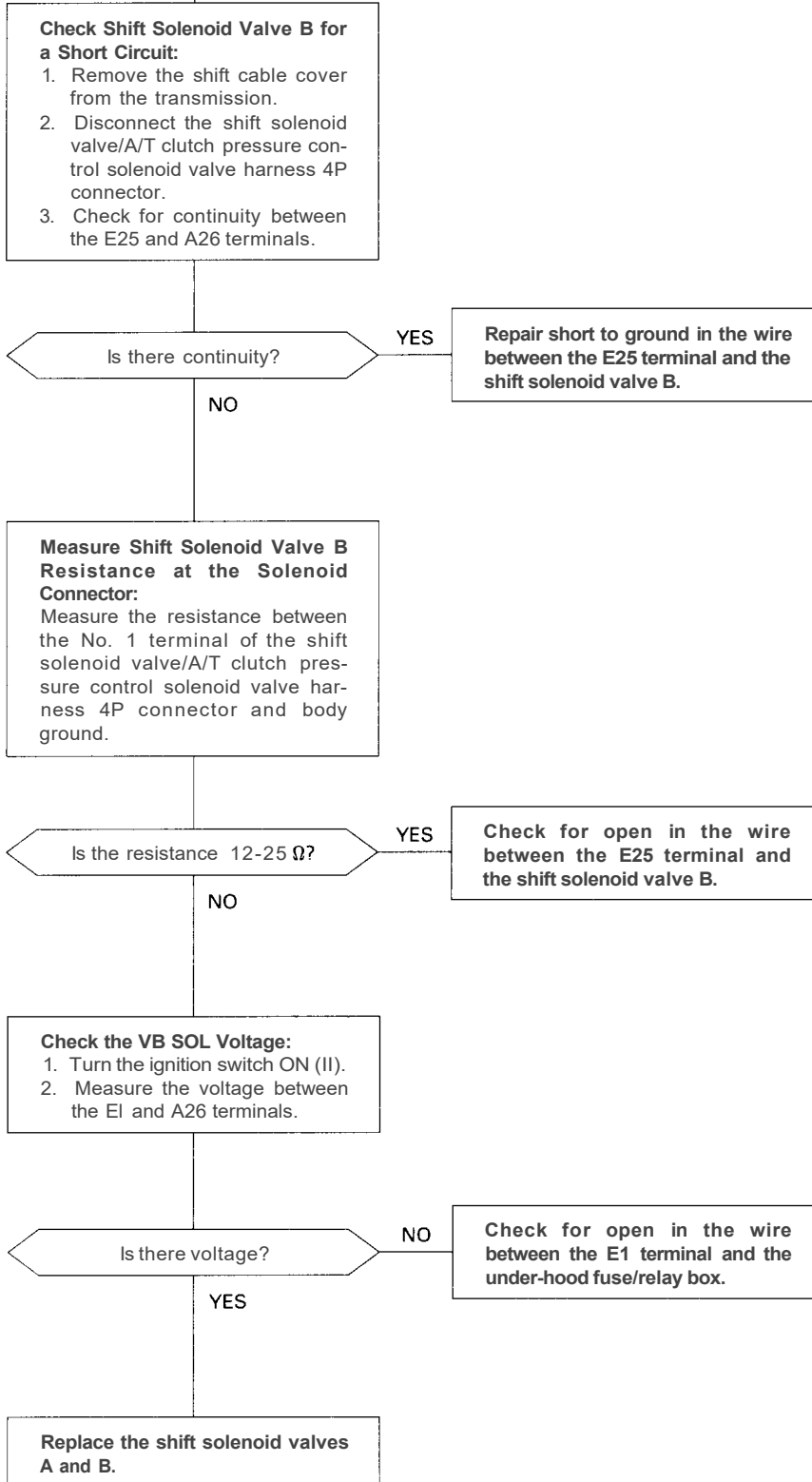
Is the resistance 12-25 Ω? **YES** → Check for loose PCM connectors. If necessary, substitute a known-good solenoid valves A and B or PCM and recheck.

NO

To page 14-71



From page 14-70



PCM CONNECTORS

A (26P)

1	2	3	4	5	6	7	8	9	10	11	12	13
14	15	16	17	18	19	20	21	22	23	24	25	26

LG1 (BRN/BLK)

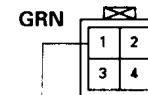
E (26P)

1	2	3	4	5	(6)	7	8	9	10	11	12	13
14	15	16	17	18	19	20	21	22	23	24	25	26

SHB (GRN/WHT)

Wire side of female terminals

SHIFT SOLENOID VALVE/A/T CLUTCH PRESSURE CONTROL SOLENOID VALVE HARNESS 4P CONNECTOR



Terminal side of male terminals

PCM CONNECTORS

A (26P)

1	2	3	4	5	6	7	8	9	10	11	12	13
14	15	16	17	18	19	20	21	22	23	24	25	26

LG1 (BRN/BLK)

VB SOL (BLK/YEL)

E (26P)

1	2	3	4	5	(6)	7	8	9	10	11	12	13
14	15	16	17	18	19	20	21	22	23	24	25	26

Wire side of female terminals

