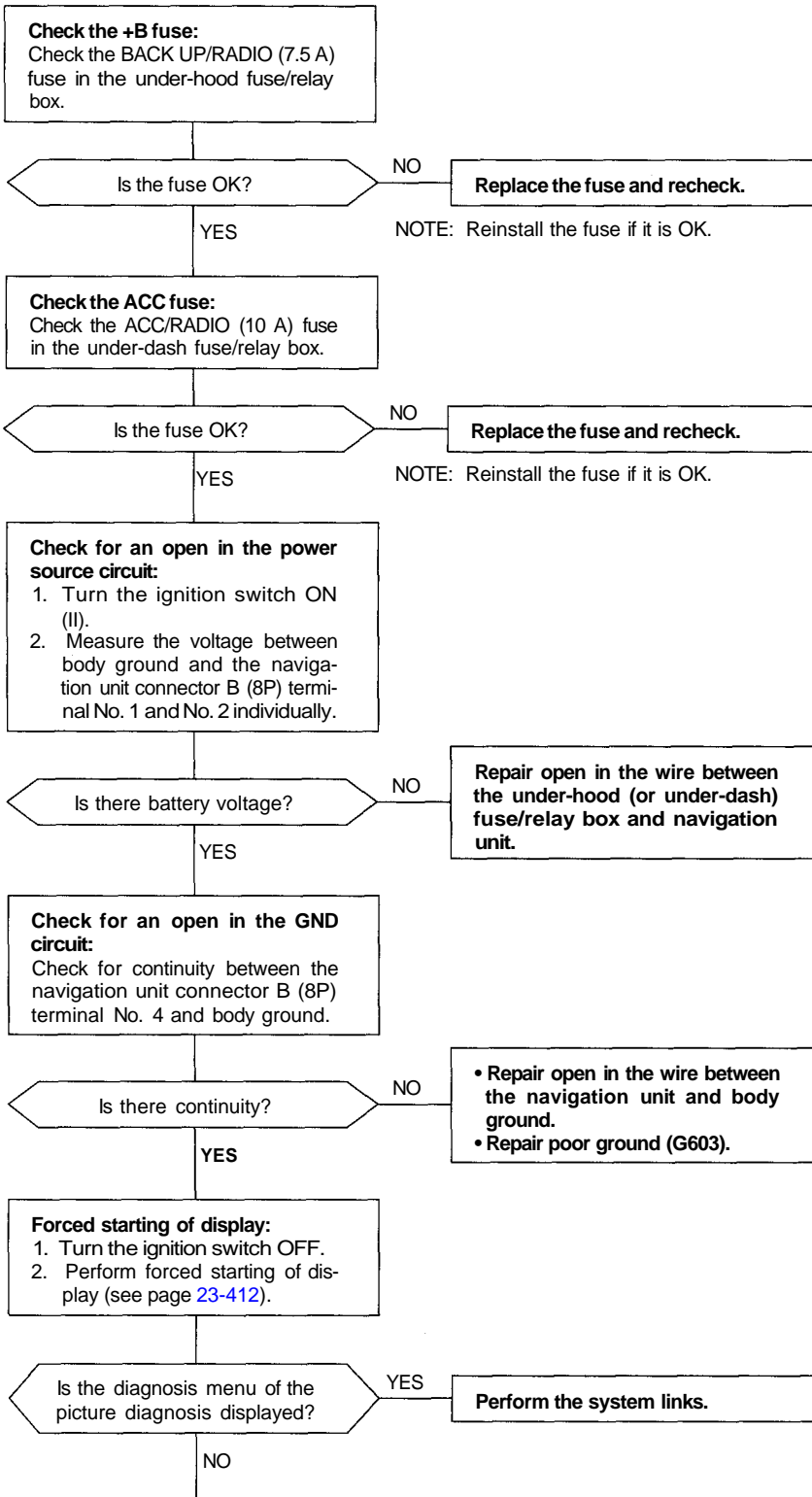


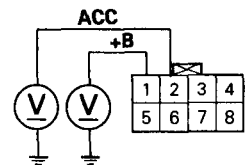
# Troubleshooting

## '96 - 99 Models

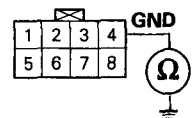
No picture is shown on the display



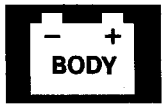
NAVIGATION UNIT CONNECTOR B (8P)



Wire side of female terminals



(To page 23-399)



(From page 23-398)

**Check the picture:**  
Check that the black picture is displayed (only back light is ON).

NOTE: To check, shield the display unit from the sun with your hand.

Is the black picture displayed? **YES** → **Replace the navigation unit.**

**NO**

**Check the DISPLAY BUS circuit:**

1. Disconnect the navigation unit and display unit connectors.
2. Check for continuity between the display unit connector (20P) terminal No. 5 and the navigation unit connector A (20P) terminal No. 4. There should be continuity.
3. Check for continuity between the display unit connector (20P) terminal No. 15 and the navigation unit connector A (20P) terminal No. 14. There should be continuity.
4. Check for continuity between the same terminals and body ground. There should be no continuity.

Are all checks OK? **NO** → **There is an open or short to body ground between the display unit and the navigation unit. Replace the affected shielded harness.**

**YES**

**Check the DISPLAY BUS Signal:**

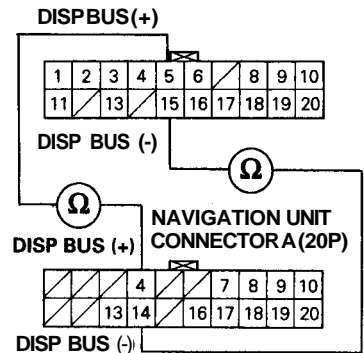
1. Reconnect the navigation unit connector A (20P).
2. Check for voltage between body ground and the display unit connector (20P) terminals No. 5 and No. 15 individually.

Does the voltage pulse 0 V to approx. 5 V? **NO** → **Replace the navigation unit.**

**YES**

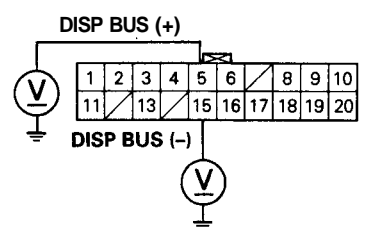
**Replace the display unit.**

DISPLAY UNIT CONNECTOR (20P)



Wire side of female terminals

DISPLAY UNIT CONNECTOR (20P)



Wire side of female terminals

(cont'd)