

Applies To: **2010 MDX – ALL**
2011 MDX – From VIN 2HNYD2H..BH000001 thru 2HNYD2H..BH545131

December 22, 2011

mine is in this range

Front or Rear Seat Heater Does Not Turn Off

SYMPTOM

The front or rear seat stays hot after the seat heater switch turned off.

PROBABLE CAUSE

The seat heater switch is faulty.

CORRECTIVE ACTION

Replace the seat heater switch. If the front seat heater switch is faulty, go to REPAIR PROCEDURE A. If the the rear seat heater switch is faulty, go to REPAIR PROCEDURE B.

PARTS INFORMATION

Driver's Seat Heater Switch:
 P/N 35650-STX-A02ZA

Front Passenger's Seat Heater Switch:
 P/N 35600-STX-A02ZA

Left Rear Seat Heater Switch:
 P/N 35650-STX-A12

Right Rear Seat Heater Switch:
 P/N 35600-STX-A12

TOOL INFORMATION

KTC Trim Tool Set: T/N SOJATP2014

WARRANTY CLAIM INFORMATION

The normal warranty applies.

OP#	Description	FRT
6101E9	Replace the driver's seat heater switch.	0.4
6101E9A	Replace the front passenger's seat heater switch.	0.4
6111A9	Replace the left rear seat heater switch.	0.3
6111A9A	Replace the right rear seat heater switch.	0.3

Failed Part: 35650-STX-A02ZA

Defect Code: 03214

Symptom Code: 03220

Skill Level: Repair Technician

REPAIR PROCEDURE A

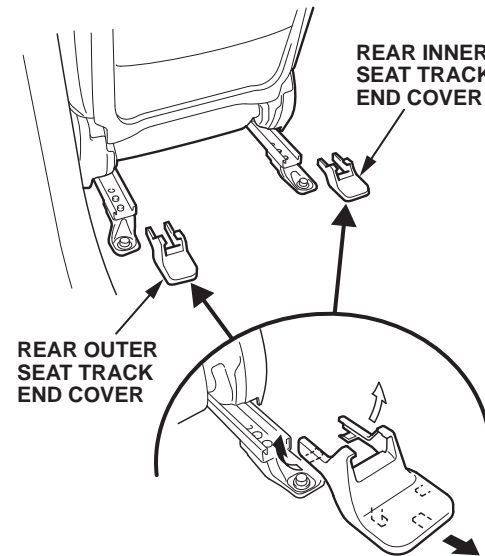
NOTE:

- Put on gloves to protect your hands.
- Take care not to scratch the center console.
- Use the appropriate tool from the KTC trim tool set to avoid damage when removing components.
- Take care not to scratch the body or damage the seat covers.
- This procedure is an outline form that you can also use as a checklist for the repair. If you need more details on the item below, bookmark it in the *10-12 MDX Service Manual*, or view it online: [Battery Disconnection/Reconnection](#)

1. Slide the front passenger's seat all the way forward, and adjust the seat to its maximum height.

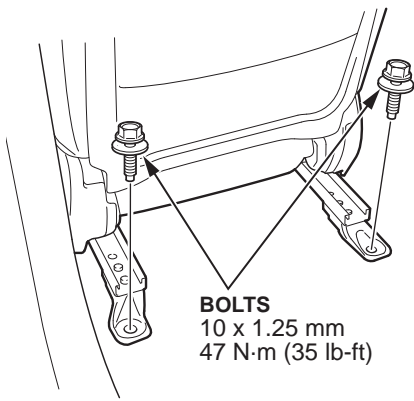
NOTE: Both the driver's and front passenger's seat heater switches are best accessed through the passenger's side of the center console.

2. Remove the rear outer and inner seat track end covers.

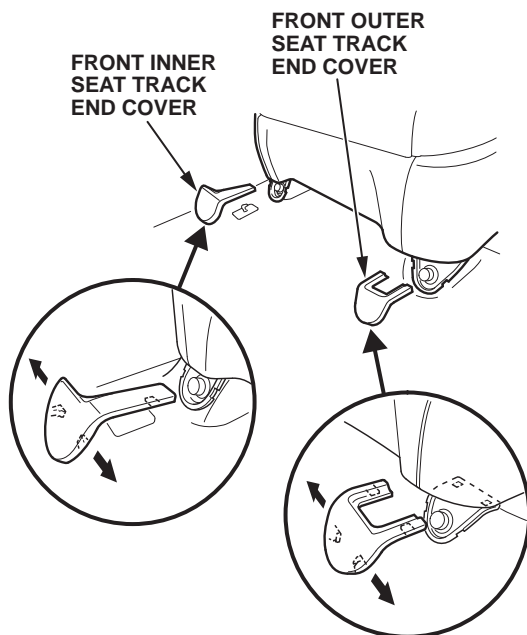


CLIENT INFORMATION: The information in this bulletin is intended for use only by skilled technicians who have the proper tools, equipment, and training to correctly and safely maintain your vehicle. These procedures should not be attempted by “do-it-yourselfers,” and you should not assume this bulletin applies to your vehicle, or that your vehicle has the condition described. To determine whether this information applies, contact an authorized Acura automobile dealer.

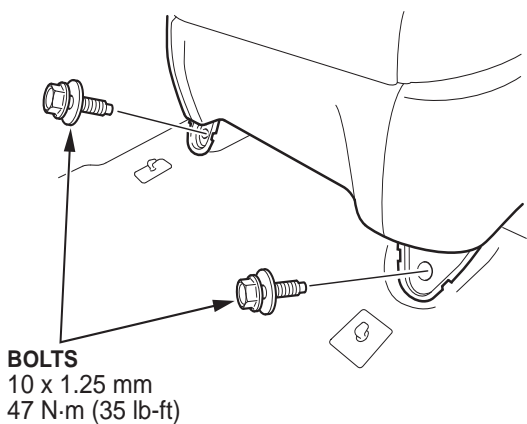
- Remove the rear bolts.



- Slide the seat all the way back, and remove the front outer and inner seat track end covers.



- Remove the front bolts.

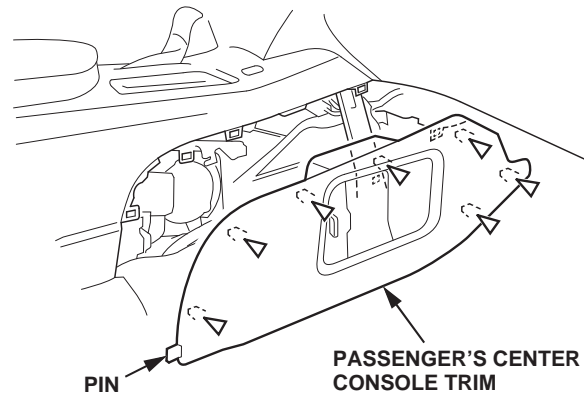


- Do the battery terminal disconnection procedure, and wait at least 3 minutes.

- Carefully tilt the seat backward to gain access to the passenger's side center console trim.

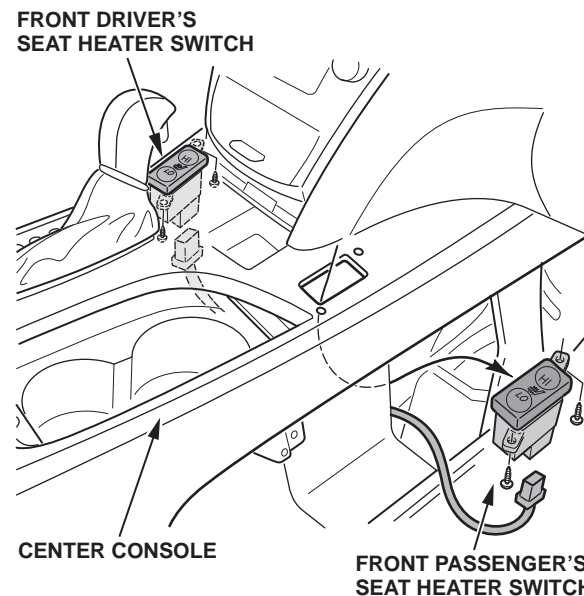
NOTE: It is not necessary to disconnect any of the connectors.

- Detach the clips by pulling the passenger's center console trim out. Pull the trim forward to release its pin from the center console, then remove it.



- Disconnect the switch connector, and remove the two screws from the faulty switch.

NOTE: Both the driver's and front passenger's seat heater switch are best accessed through the passenger side of the console.



- Install the new switch, and connect the connector.

- Reinstall the passenger's center console trim.

- Reinstall the passenger's seat, and torque the two front bolts to **47 N·m (35 lb-ft)**.

- Do the battery terminal reconnection procedure.

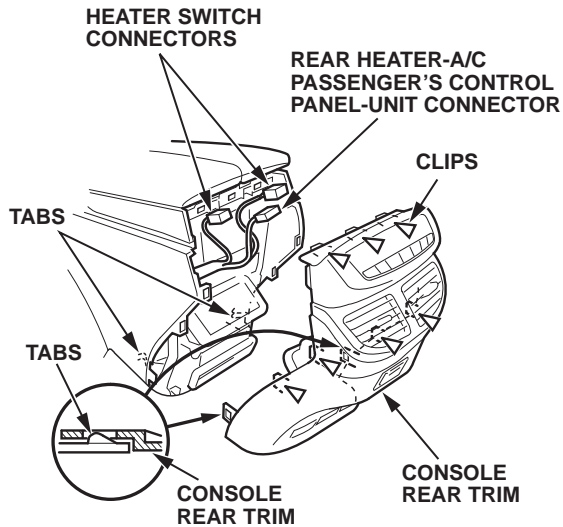
- Slide the seat forward, install the seat's two rear bolts, and torque them to **47 N·m (35 lb-ft)**.

REPAIR PROCEDURE B

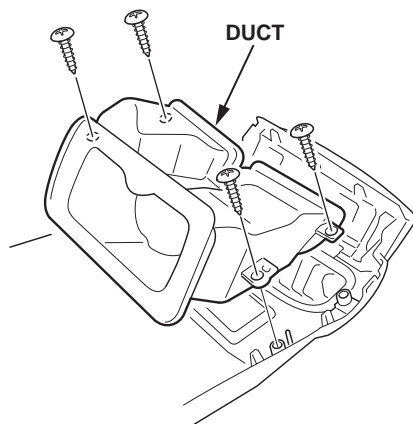
NOTE:

- Put on gloves to protect your hands.
- Use the appropriate tool from the KTC trim tool set to avoid damage when removing components.
- Take care not to scratch the center console.
- Take care not to scratch the body or damage the seat covers.

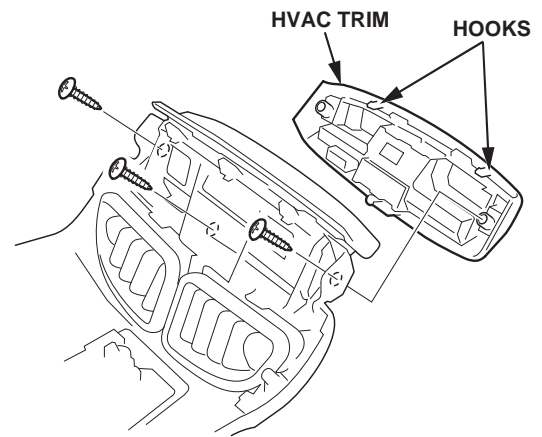
1. Starting from the top, gently pull out the console rear trim to detach the clips, then pull out the trim to detach the remaining clips and release the lower tabs. Disconnect the connectors, then remove the trim.



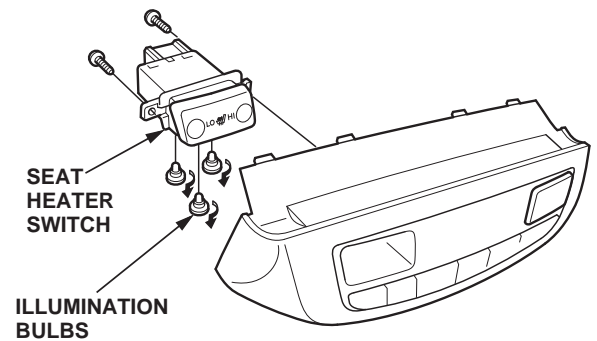
2. Disconnect the following connectors:
 - Rear heater-A/C passenger's control panel-unit connector
 - Second row seat heater switch connector
 - RES auxiliary jack assembly connector
3. Remove the screws, then remove the center console duct.



4. Remove the screws and release the hooks, then remove the HVAC trim.



5. Remove the two screws and the seat heater switch.



6. Install the new seat heater switch.
7. Reinstall the HVAC trim.
8. Reinstall the center console duct.
9. Reconnect the connectors, and reinstall the console rear trim.