



## Water Leak at the Rear of the Moonroof

(Supersedes 08-015, dated May 13, 2008, to revise the information marked by the black bars)

### REVISION SUMMARY

In Applies To and REPAIR PROCEDURE, 2009–10 models were added.

### SYMPTOM

Water enters the vehicle through the rear section of the moonroof.

### PROBABLE CAUSE

Water splashes out of the drain channel into the interior of the vehicle.

### CORRECTIVE ACTION

Install a moonroof drain channel seal.

### PARTS INFORMATION

Moonroof Drain Channel Seal:  
P/N 70251-STX-305

### WARRANTY CLAIM INFORMATION

The normal warranty applies.

Operation Number: 8141M4

Flat Rate Time: 0.4 hour

Failed Part: P/N 70200-STX-A01

Defect Code: 03801

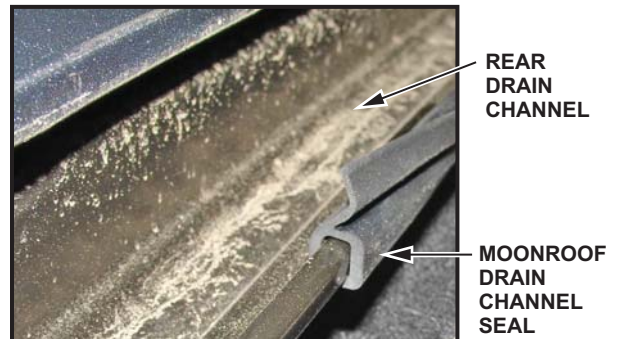
Symptom Code: 05907

Template ID: 08-015A

Skill Level: Repair Technician

### REPAIR PROCEDURE

1. Remove the moonroof glass to gain access to the rear drain channel:
  - Refer to page 20-65 of the *07–09 MDX Service Manual*, or page 20-63 of the *2010 MDX Service Manual*, or
  - Online, enter keywords **MOON GLASS**, and select **Moonroof Glass Replacement** from the list.
2. Install a new seal on the front edge of the rear drain channel:
  - Attach the lower lip of the seal starting at one corner of the drain.
  - Roll the seal up and rearward over the lip until it is installed all the way across the drain channel.
  - Make sure the seal is centered.



3. Reinstall the moonroof glass in the reverse order of removal.